



LEEUWENBURGH ANGUS

28TH ANNUAL BULL SALE

TUESDAY, MARCH 12, 2019

1:00 ^{PM} - BALOG AUCTION

LETHBRIDGE, ALBERTA

PLEASE BRING
THIS CATALOGUE
TO THE SALE

TO VIEW OUR CATALOG ONLINE : www.leeuwenburghangus.com



Friends & Fellow Cattlemen

Welcome to our 28th Bull Sale. Another year has passed, one that has presented it's own set of challenges, all of which make us even more thankful to those many friends and customers, who continue to show confidence in our breeding program. We are more motivated then ever to produce a product that genetically advances your cattle operations, and increases profitability in the cattle business. It is our quest to provide multi-trait bulls, that give the real world rancher many options for any cow herd. Our 2019 lineup of bulls is loaded with growth and calving ease. We encourage you to study the offering, and we look forward to discussing the bulls and your breeding requirements. We invite you to view the bulls and the cow herd anytime. We also value everyone's input , so we can constantly move forward and improve. Please feel free to call anytime, and we look forward to seeing you on March 12th!

from all of us at Leeuwenburgh Angus



Johnny, Charles, Willard, Jack, Dennis

BALOG AUCTION SERVICES LTD

Fellow Cattlemen

Welcome to One and All! It is with a great deal of pleasure and excitement that we tackle a New Year! The Leeuwenburgh Sale offering, adds to the enthusiasm and anticipation of the potential ahead. Leeuwenburgh Angus are leaders in the Industry and many programs, both Purebred & Commercial, use this sale as a guide to making their own program better. The Newest Exciting Powerful Genetics, back up with Tremendous Performance, make this sale the "ONE TO ATTEND!!!"

Repeat customers who have shared in the success of this proven program are a true testament to why you should use a Leeuwenburgh Bull. Come buy from a very successful program and a family who sincerely appreciate their buyer's!

Respectfully, Bob Balog



HEIFERS

We will be offering 50 select red commercial, replacement heifers. These are cut off the top of our breeding program, and are backed by 30 years of breeding. All are bred and born here, as well as their dams. They will carry either 1/8 Simmental influence, or be from a Brockle or Baldie cow. They will be palpated and vet checked for fertility, and have a sale day weight. Cattle are under the Pfizer Gold vaccination program

SALE DAY PHONES

BALOG AUCTION - 403.320.1980
DENNIS LEEUWENBURGH - 403.308.3003
JOHNNY LEEUWENBURGH - 403.382.1794
JACK LEEUWENBURGH - 403.330.6123

SALE STAFF

AUCTIONEER

RINGMEN

LOUIS BALOG - 403.331.0611
BRAD BALOG - 403.642.7444
MARK LENZ - 403.330.7600

CASTLEROCK MARKETING

SHANE CASTLE - 306.741.7485
DEVIN WARRILOW - 780.581.4329
MARK FORSYTH - 306.784.7844

DENNIS



JOHNNY



JACK



"IN APPRECIATION"



JOSH

We'd like to thank Josh Pickett for his commitment and hard work. He shares our passion for cattle and farming, and has become very familiar with our operation. Thank for dedicating so much time and effort.



BJ

Thanks to BJ Scheirlink for helping us out with almost anything, at various times of the year. We appreciate the time you take out of your schedule to make ours less hectic.

Once again, our thanks to Buck Thompson for coming out to fit the bulls before picturing, and Grant and Lauralee Rolston for their effort, picturing

BULL SELECTION is more important now than it has ever been, in order to MAXIMIZE your cowherd's potential. Settling for just any bull, because he is a couple of hundred dollars cheaper, could deprive you of thousands later. Remember, pounds add up! Find the time to evaluate a bull's performance and EPD'S alike and consider if a breeder's program is similar to your ranch environment - your buying a piece of the program!

HOW MUCH CAN YOU AFFORD TO PAY FOR A TOP BULL?

COWMAN FORMULA

Increase in pounds per calf from a top-performance bull

X No. of cows bred to him per year

X No. of years to keep the bull

X Expected selling price of calves

= Additional dollars you can pay for a better bull

Example: A bull who will add 30 lbs to the weaning weight of each of his calves mated to 25 cows per year for 4 years and you sell the calves for \$1.50 per pound.

$$30 \times 25 = 750 \times 4 = 3000 \times 1.50 = \$4,500$$

This bull is worth \$4,500 more than the average bull who will keep your weaning weights the same. Take this formula and put your own figures in and see what you can afford to pay. This equation does not consider the increase in value due to calving-ease, higher quality replacement heifers, yearling growth, feedlot gain and improved carcass quality.

ALL BULLS ARE FULLY TESTED AND 100% GUARANTEED

NO BULLS SOLD PRIOR TO THE SALE!

Everything possible will be done to assure that every bull in this sale will be a breeder. Dr. Mitch Oviatt, (Ranch Docs, Lethbridge) will scrotal measure and physically evaluate every bull. Any animal that has not proven itself within 6 months of sale, (September 30, 2019) if in healthy condition, may be returned to the seller at the buyer's expense. The seller reserves the privilege of trying for a 6-month period to prove the animal a breeder. The seller at his option may either return the purchase price or replace the animal with another of equal quality in full settlement and satisfaction of all claims. Any complaints regarding any animal in this sale shall be made to the breeder. All complaints must be reported in writing by the buyer to the seller within 6 months and any animal returned must be free of disease and in good health.

CATALOGUE INFORMATION

All information is up to date as of publication date. Pedigree's and EPD's are supplied by the Canadian Angus Association, and all other information has been supplied by the seller. Information in this catalogue is believed to be accurate, but any errors discovered in the catalogue, will be corrected by announcements, from the auction stand at sale time, and such corrections will take precedence over the printed matter in this document.

IN - HERD SEMEN INTEREST

Leeuwenburgh Angus reserves the right to draw semen on any bull sold at the buyer's convenience and our cost.

DELIVERY - \$100 CREDIT IF BULL IS TAKEN HOME SALE DAY

Assistance will be given in making delivery after the sale.

PRESALE LUNCH

Join us for lunch at 11:30 a.m. Sale Day

INSURANCE

Available at Balog Auction Services

Maureen- 403-320-1980

We strongly suggest you insure your bull purchases.

ACCOMMODATIONS - in Lethbridge, less than a 10 minute drive

Quality Inn & Suites - 403-331-6440

Hampton Inn & Suites - 403-327-1386

Holiday Inn - 403-380-5050

Premier Inn & Suites - 403-380-6677

Comfort Inn - 403-320-6993

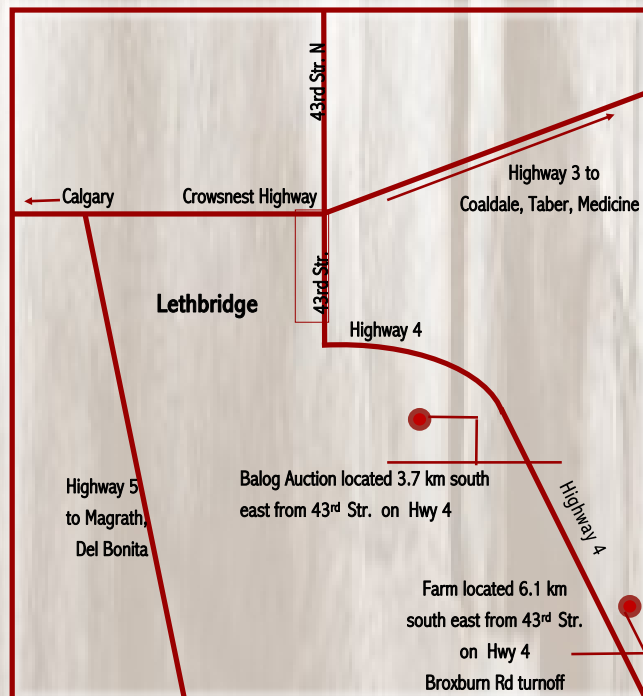
Call 403-327-9618 if you need assistance with accommodations.

Internet Bidding Available

DLMS
www.dlms.ca

For more information Call DLMS Reps:
Mark Shologan 780.699.5082
Whitney Bosovich 780.991-3025

View Catalog online at: www.leeuwenburghangus.com



RED LWNBRG HARVESTOR 103C ~ 10 SONS SELL

TED 103C ~ 1846338 ~ 1/24/2015 Lots 7, 8, 46, 49, 61, 107, 108, 116, 129, 137



S A V HARVESTOR 0338
Sire: TED HARVESTOR 154A (RC)
 RED LWNBRG ANISTON 1375 MAF
 RED BLADES MAGNUM 11W
Dam: RED LWNBRG CADENCE 141Y
 RED LWNBRG OPTIMA 100W

S A V HERITAGE 6295
 S A V EMBLYNETTE 7749
 RED BRYLOR MASTER PLAN 17M
 RED TED FARGO 33L
 RED BAR-E-L NATURAL 44N
 RED QW HEVN'S CASSIE 38K
 RED CROWFOOT OLES'S OSCAR 2042M
 RED LWNBRG PEARL 18N

BW - 85
 205D - 810
 365 -1386
 BW +2.9
 WW +68
 YW +119
 Milk +19
 TM +53
 Yearl. Scrotal
 40 cm

RED LWNBRG CADENCE 141Y



- High selling \$57,500 bull in 2016 to Sandhill Red Angus
- Powerful phenotype, added length & herd bull profile
- Excellent footed, outcross pedigree, featuring S A V Harvestor 0338
- Daughters are in production now and will heavily influence our cow herd for years to come
- Top 1% of the breed in WW, YW, TM, CW, & top 10% Marbling
- Half brothers were high sellers in previous sales to Count Ridge Angus and Scott Stock Farms

RED LWNBRG BROXBURN 68D ~ 8 SONS SELL

TED 68D ~ 1901107 ~ 1/24/2016 Lots 10, 25, 37, 47, 54, 63, 78, 153



RED BIEBER ROLLIN DEEP Y118
Sire: LWNBRG CROSS OVER 66B
 TED BISMARK 50Y

RED BIEBER ROOSEVELT W384
 RED BIEBER TILLY 399W
 S A V BISMARCK 568Z
 TED COMMANDER 26W
 RED SHOCO SIR ROBIN
 RED VDAR BLACKANA 303
 RED LSF COMBINATION A301M
 RED TED LODI PRINCE 118N

BW - 90
 205D - 758
 365D -1309
 BW -1.5
 WW +47
 YW +74
 Milk +21
 TM +45
 Yearl. Scrotal
 40 cm

CROSSOVER 66B



- A sale highlight to Soderglen in 2017 that continued the maternal strength of Crossover 66B
- Complete cow maker with an exceptional cow family
- Elite dam in 18W and grand dam, both having a ratio of 106 on 8 calves
- Maternal sister was a former pick of the bred heifers, and now resides at Six Mile Ranch
- Outcross genetics from the proven cow maker Crossover 66B
- Top 10% in BW, WW, TM, CE, MCE, & Marb.



RED TED SHOCO DATA 18W

TED BISMARK 50Y



RED LWNBRG ELECTRIC 4D ~ 4 SONS SELL

TED 4D ~ 1901064 ~ 1/5/2016 Lots 1, 118, 128, 154



Red LWNBRG Scarlett 62Z



RED ANDRAS IN FOCUS B175
Sire: RED ANDRAS FUSION R236
 RED ANDRAS BELLE B167
 RED LAZY MC COWBOY CUT 26U
Dam: RED LWNBRG SCARLETT 62Z
 RED TED GRAND CANYON 144R OSF

MYTTY IN FOCUS
 RED DI ESTONIA 316
 RED ANDRAS THUNDER B105
 RED ANDRAS BELLE 416
 RED LAZY MC STOUT 30S
 RED LAZY MC STAR 185M
 RED LCHMN GRND CANYON 1244G
 RED TED INIGA SILVEIRAS 8E

BW - 77
 205D -787
 365D -1429
 BW -2.4
 WW +70
 YW +123
 Milk +18
 TM +53
 Yearl. Scrotal
 38 cm

- A powerfully constructed herd sire with a massive hip and added bone
- Backed by a strong cow family that produces pounds and fertility
- Top of the breed for WW, YW, MT, CE & CW
- He boasts a 124 Yearling Index, while his dam posted a 134 YW and Granddam had a ratio of 107 on 6 calves, and was designated Premier by the CAA
- Impressive as the growth is on his progeny, he maintained a -2.4 BW Epd and 30 progeny averaged 77 lbs at birth

RED BRYLOR AUTOMATIC 95B ~ 11 SONS SELL

LMP 95B ~ 1788604 ~ 2/25/2014 Lot 32, 34, 57, 59, 68, 79, 83, 88, 92 (bl), 105, 123,

RED WHEEL DODGE CITY 3U
Sire: RED WHEEL DODGE CITY 61Y
 RED WHEEL PRIDE 29N

HF KODIAK 5R
Dam: BLACK BRYLOR LAKME 155Y
 RED XXX LAKME 70M

RED NORTHLINE ATLANTIC CITY
 RED HANDFORD MISS CHIEF 7K
 RED BRYLOR STALLION 19J
 RED FLY AWAY PRIDE 161K
 SANDY BAR ADVANTAGE 43M
 WILBAR RUBY 955N
 RED BRYLOR NEW TREND 22D
 RED FINE LINE LAKME 21J

- All Canadian pedigree, that continues the Kodiak line
- Significantly adds depth, capacity, and raw power & pounds
- Daughters are powerfully built with exceptional udder quality
- Top 1% of the breed in WW, YW, TM and Carcass Weight
- Grandam is the Premier Donor XXX Lakme 70M, who has an average ratio of 113

BW - 88
 Sept.10/14-705
 Feb.25/15-1355
 BW +4.2
 WW +72
 YW +116
 Milk +19
 TM +55
 Mt. Scrotal
 42 cm

RED BAR-E-L FIRST DOWN 161D ~ 8 SONS SELL

JTL 161D ~ 1922963 ~ 3/11/2016 Lot 17, 45, 50, 69, 70, 102, 120, 130

XO CROWFOOT 0102X
Sire: RED CROWFOOT 4ACRES 2193Z
 RED CROWFOOT MISS STRTCH

RED BAR-E-L APPROVAL 4L
Dam: RED BAR-E-L GLORIA 87R
 RED BAR-E-L FIRST LADY 95J

RED CROWFOOT MOONSHINE 8081U
 XO CROWFOOT BLACKBIRD 8810U
 RED SSS OLE 746P
 RED CROWFOOT LADY 3320N
 RED TERR-RON CARLTON 810H
 RED BAR-E-L CLASS 10J
 RED YY RED KNIGHT 640F
 RED LITTLE DE GLORIA 270Y

- High selling bull at the 2017 Bar-E-L sale to Tannon Dvorak & ourselves, with impeccable herd bull presence & design
- Set to become the heaviest used sire in our history, blowing away all expectation with his first calf crop
- Fault free , heavy muscled herd sire that will take a program to the next level
- Loads of shape, substance & style, with a maternally charged pedigree, with his dam graduating to Six Mile's donor pen after 11 natural calves
- A multi trait sire, that will produce dominating progeny with industry wide appeal, and add long lasting, real world profitability to a cow herd

RED COUNT RIDGE ICON 1D ~ 8 SONS SELL

XGB 1D ~ 1926244 ~ 1/1/2016 Lot 9, 11, 58, 64, 95, 156, 168, 169

RED 5L NORSEMAN KING 2291
Sire: RED RMJ REDMAN 1T
 CROWFOOT KKURUBA 4003P

RED GEIS PRIME RIB 411
Dam: RED DELAR GOLD EDGE 2Y
 RED GOLD EDGE 2T

RED VGW KING OF THE WEST
 RED NORSEMAN KING 1312
 O C C HUNTER 928H
 RED CROWFOOT KURUBA 2030M
 RED PREMIER PATRIOT 16
 RED GEIS PATRIOT 16
 RED BRYKIR BEW TREBD 22D
 RED SCTC GOLD EDGE 2E

- Was selected from Count Ridge in 2017 for his extreme length, large foot and calving ease
- Great breeding capabilities and docility
- Strong fleshing ability and Angus character
- Look for his sons to have the same calving ease, calf vigor and length
- Dam has breed leading milk, with a ratio of 105 on 6 natural calves

RED SIX MILE CROWSNEST 313D~ 5 SONS SELL

SIXM 313D ~ 1940224 ~ 3/08/2016 Lots 71, 117, 139, 158, 160

RED SIX MILE MASTERMIND 854M
Sire: RED SIX MILE WILD WEST 0913W
 RED JCC ELORA 45S

RED VGW GAME PLAN 816
Dam: RED SIX MILE BERRY 373X
 RED SIX MILE BERRY 435U

RED TOWAW INDEED 104H
 RED RSL MISS SELMA 384F
 RED SIX MILE OUT BACK 219P
 RED JCC ELORA 203N
 RED VGW GAME PLAN 508
 RED VGW TW DOLL 0270
 RED SIX MILE PRICELESS 268P
 RED SIX MILE BERY 849M

LWNBRC RESERVE 163C ~ 3 SONS SELL

TED 163C ~ 1846391 ~ 3/07/2015 Lots 48, 155, 157

RITO 707 OF IDEAL 3407
Sire: S A V RESOURCE 1441
 W A V BLACKCAP MAY 4136

MYTTY IN FOCUS
Dam: TED IN FOCUS 16W
 VWB PRIDE LADY 124T

R R RITO 707
 IDEAL 3407 OF 1418 076
 S A V 8180 TRAVELER 004
 S A V MAY 2397
 S A F FOCUS OF E R
 MYTTY COUNTESS 906
 RAINBOW HILLS PRIME CUT 114P

- High Selling black bull in 2016 to Hillmers and now resides at Scott Stock Farm
- Stands near the top in terms of fleshing ability, cow family strength, muscle, and docility
- Elite Dam with a ratio of 104 on 6 calves and 2 natural daughters walking in our herd
- First daughters are heavy milking, eye catching and fertile, while his sons have dominated previous sales with superior muscle, growth & carcass
- A proven multi trait sire, that is one of the very best we've raised

BW - 86
 205D - 804
 365D-1474

BW +1
 WW +30
 YW +51
 Milk +15
 TM +30

Yearl. Scrotal
 42 cm



BW - 79
 205D -711
 365D-1044

BW -1.2
 WW +30
 YW +59
 Milk +23
 TM +38

Yearl. Scrotal
 43 cm



BW - 86
 205D - 877
 365D-1590

BW +1.6
 WW +44
 YW +75
 Milk +25
 TM +47

Yearl. Scrotal
 38 cm



BW 83
 205D -748
 365D-1410

BW +0.5
 WW +54
 YW +108
 Milk +24
 TM +51

Yearl. Scrotal
 40 cm



REFERENCE SIRES



MATERNAL BROTHER 52D



RED LWNBRG GUNNER 121D
Dam to Lot 9



RED LWNBRG ELECTRIC 1F

TED 1F ~ 2074177 ~ January 02 2018 TWIN

RED ANDRAS FUSION R236
Sire: **RED LWNBRG ELECTRIC 4D**
RED LWNBRG SCARLET 62Z

RED BRYLOR SDL PASQUALE 213P
Dam: **RED TED PASQUALE 8Z**
RED TED BARNEY 152K

RED ANDRAS IN FOCUS B175
RED ANDRAS BELLE B167
RED LAZY MC COWBOY CUT
RED TED GRAND CANYON 144R
RED VGV RAMBLER 1000
RED XXX LAKME 70M
RED TED BARNEY 24H
RED TED SARGENT SILVEIRAS 42F

20 EPDS	TOP%
BW-1.4	12
WW+55	3
YW+97	2
Milk+21	32
TM+48	5

AOD	BW	WW	205D	365D	MARB	REA	CWT
6	64	775	687	1236	0.25	0.31	29

1F - big ribbed bull loaded with power and growth
- grand dam 152K was Elite with a ratio of 106 on 8 calves, we have two daughters in the herd
- maternal brother resides at Keho Lake Colony



RED LWNBRG HARVESTOR 7F

TED 7F ~ 2053358 ~ January 05 2018

TED HARVESTOR 154A
Sire: **RED LWNBRG HARVESTOR 103C**
RED LWNBRG CADENCE 141Y

RED 6 MILE FULL THROTTLE 171T
Dam: **RED TED FULL THROTTLE 69A**
RED TED MULBERRY 95U

S A V HARVESTOR 0338
RED LWNBRG ANISTON 137S
RED BLADES NATURAL 11W
RED LWNBRG OPTIMA 100W
RED TER-RON FULLY LOADED 540R
RED SIX MILE WITZEL 360J
RED FINE LINE MULBERRY 26P
RED TED KICHEN SAGEBRUSH 109P

19 EPDS	TOP%
BW+2.8	79
WW+57	2
YW+101	1
Milk+18	55
TM+47	7

AOD	BW	WW	205D	365D	MARB	REA	CWT
5	68	715	642	1212	0.25	0.17	33

7F - solid constructed calving ease 103C son with great shape and structure
- top of the breed growth data and maternal
- pedigree loaded with exceptionally uddered cows



RED LWNBRG HARVESTOR 8F

TED 8F ~ 2053360 ~ January 06 2018

TED HARVESTOR 154A
Sire: **RED LWNBRG HARVESTOR 103C**
RED LWNBRG CADENCE 141Y

RED LAZY MC GUNNER 144B
Dam: **RED LWNBRG GUNNER 121D**
RED TED MULBERRY 95U

S A V HARVESTOR 0338
RED LWNBRG ANISTON 137S
RED BLADES NATURAL 11W
RED LWNBRG OPTIMA 100W
RED LAZY MC TROOPER 21Y
RED LAZY MC STAR 185M
RED FINE LINE MULBERRY 26P
RED TED KINCHEN SAGEBRUSH 109P

19 EPDS	TOP%
BW+0.5	36
WW+58	2
YW+98	2
Milk+17	66
TM+46	8

AOD	BW	WW	205D	365D	MARB	REA	CWT
2	66	800	794	1398	0.3	0.27	34

8F - calving ease prospect that will add calf vigor & pounds
- very complete cow maker who's dam is one of the very best young cows in the herd
- top of the breed growth numbers with an outstanding birth to yearling spread
- weaning index of 106 and yearling of 105



RED LWNBRG ICON 9F

TED 9F ~ 2053363 ~ January 07 2018

RED RMI REDMAN 1T
Sire: **RED COUNT RIDGE ICON 1D**
RED DELAR GOLD EDGE 2Y

RED LWNBRG FLEX 79B
Dam: **RED LWNBRG FLEX 51D**
RED TED BARNEY 28X

RED 5L NORSEMAN KING 2291
CROWFOOT KURUBA 4033P
RED GEIS PRIME RIB 411
RED DELAR GOLD EDGE 2T
RED MRLA FLEX 49Z
RED TED CHATEAU 6U
RED TED BARNEY 41S
RED TED KINCHEN SAGEBRUSH 163R

20 EPDS	TOP%
BW-1.8	9
WW+33	58
YW+69	26
Milk+21	24
TM+45	10

AOD	BW	WW	205D	365D	MARB	REA	CWT
2	63	720	725	1349			

10F - head turning ranch bull that will leave a trail of beautiful cows in his wake

- thick topped, loaded with muscle and length on a free and easy frame
- superior cow family with perfect udders and feet with added frame
- maternal brother sold to Crystal Spring Farming in 2017, and another went to XTC Ranches in 2018



LX 10

RED LWNBRG BROXBURN 10F

TED 10F ~ 2053361 ~ January 07 2018

LWNBRG CROSS OVER 66B
Sire: **RED LWNBRG BROXBURN 68D**
RED TED SHOCO DATA 18W

RED GMRA PEACEMAKER 1216
Dam: **RED LWNBRG RONA 110C**
RED TED DAKOTA COPPER 7W

RED BIEBER ROLLIN DEEP Y118
TED BISMARCK 50Y
RED SHOCO DATA 18W
RED TED COMBINATION 40R
RED FRITZ JUSTICE 8013
RED GMRA THELMA 930
RED OHRR DAKOTA COPPER 29K
RED TED NEW TREND 108P

'19 EPDS	TOP%
BW -0.2	25
WW+48	10
YW +76	15
Milk+23	15
TM +50	3

AOD	BW	WW	205D	365D	MARB	REA	CWT
3	77	800	762	1291	.20	0.53	45

LX 11

RED LWNBRG ICON 11F

TED 11F ~ 2053362 ~ January 07 2018

RED RMJ REDMAN 1T OSF MAF
Sire: **RED COUNT RIDGE ICON 1D**
RED DELAR GOLD EDGE 2Y

RED TNTS BANK STATEMENT T272
Dam: **RED TED BANK STATEMENT 53Y**
RED TED MAKE MY DAY 215P

RED 5L NORSEMAN KING 2291
CROWFOOT KURUBA 4033P
RED GEIS PRIME RIB 411
RED DELAR GOLD EDGE 2T
RED LIC MISSION STATEMENT P27
RED NSFM MISS DYNAMICS M14
RED TED MAKE MY DAY 74J
RED TED NONE BETTER 25J

'19 EPDS	TOP%
BW+0.5	37
WW+43	21
YW +85	6
Milk+18	66
TM +40	30

AOD	BW	WW	205D	365D	MARB	REA	CWT
7	86	905	819	1524	0.2	0.46	20

11F - powerful beast of a bull that is not hard to find in the pen

- added length and frame for ranchers serious about adding pounds
- challenging to find a bull in any breed with as much efficiency and performance
- the number 1 ranked bull in a group of 63 with a yearling index of 122 and a weaning of 106
- very docile herd bull that will no doubt be a sale day favorite



RED ANGUS



18F-



RED LWNBRG FUSION 7D



RED ANDRAS FUSION

14F - tough to match natural thickness, muscle shape and capacity
 - maternally charged pedigree, backed by some of the most productive, fertile and heavy milking dams in our herd
 - stout rumped beef bull that will sire forage efficient performance cattle
 - 5th ranked bull out of a group of 68 at weaning, for a ratio of 112



RED LWNBRG OUTLOOK 14F

TED 14F ~ 2058320 ~ January 08 2018

RED 5L ADVOCATE 817-
Sire: RED 5L DEFENDER 560-30Z
 5L BLACK ADINA 525-560

RED ANDRAS FUSION
Dam: RED LWNBRG FUSION 7D
 RED LWNBRG ROLLIN DEEP 36B

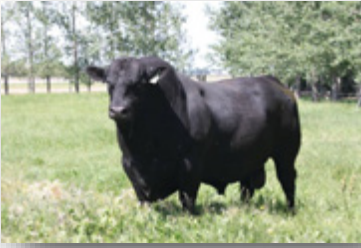
RED 5L SIGNATURE
 RED 5L MARTA 345-817
 TC STOCKMAN 365
 RED 5L ADINA 293-525
 RED ANDRAS IN FOCUS B175
 RED ANDRAS BELLE B167
 RED BIEBER ROLLIN DEEP Y118
 RED TED LODI PRINCE 155P

'19 EPDS	TOP%
BW+0.8	41
WW+53	4
YW +92	3
Milk+20	33
TM +47	7

AOD	BW	WW	205D	365D	MARB	REA	CWT
2	85	860	856	1439	0.65	0.3	21

17F - powerful First Down son with added frame and top end growth and a weaning index of 107
 - the Harvester 154A daughters have beautiful udders and weaned some of the heaviest calves this year

HARVESTOR 154A



RED LWNBRG HARVESTOR 176C



RED LWNBRG FIRST DOWN 17F

TED 17F ~ 2053367 ~ January 9 2018

RED CROWFOOT 4ACES 2193Z
Sire: RED BAR-E-L FIRST DOWN 161D
 RED BAR-E-L GLORIA 87R

TED HARVESTOR 154A
Dam: RED LWNBRG HARVESTOR 176C
 RED TED SPITFIRE 39Z

XO CROWFOOT 0102X
 RED CROWFOOT MISS STRTCH
 RED BAR-E-L APPROVAL 4L
 RED BAR-E-L FIRST LADY 95J
 S A V HARVESTOR 0338
 RED LWNBRG ANISTON 1375
 RED TED MAKE MY DAY 31R
 RED TED CATALYST 148S

20 EPDS	TOP%
BW+3.7	90
WW+51	7
YW+84	6
Milk+17	66
TM+39	37

AOD	BW	WW	205D	365D	MARB	REA	CWT
3	88	820	749	1319			



RED LWNBRG DEFENDER 18F

TED 18F ~ 2062947 ~ January 11 2018

RED 5L ADVOCATE 817-14W
Sire: RED 5L DEFENDER 560-30Z
 5L BLACK ADINA 525-560

RED MRLA FLEX 49Z
Dam: RED LWNBRG FLEX 97D
 RED TED LARAMIE 4Z

RED 5L SIGNATURE 5615
 RED 5L MARTA 345-817
 TC STOCKMAN 365
 RED 5L ADINA 293-525
 MRLA 53W
 RED GET-A-LONG FIREFLY 363
 RED GMRA LARAMIE 5110
 RED TED SAKIC 103W

19 EPDS	TOP%
BW+0.4	34
WW+34	54
YW+60	47
Milk+16	76
TM+33	70

AOD	BW	WW	205D	365D	MARB	REA	CWT
2	74	680	700	1215	0.4	0.42	20

18F - calving ease bull that will be able to mate heifers for a few years due to his moderate frame
 - outcross genetics from both sides of the pedigree with TC Stockman and MRLA 53W , who was sired by the renowned Network 4200



RED LWNBRG HARVESTOR 19F

TED 19F ~ 2053368 ~ January 11 2018

TED HARVESTOR 154A
Sire: RED LWNBRG HARVESTOR 180C
 RED LWNBRG IVY 9Z

S A V HARVESTOR 0338
Dam: TED HARVESTOR 104A
 RED TED MAKE MY DAY 215P

S A V HARVESTOR 0338
 RED LWNBRG ANISTON 1375
 RED SIX MILE SAKIC 832S
 RED TED MAKE MY DAY 215P
 S A V HERITAGE 6295
 S A V EMBLYNETTE 7749
 RED TED MAKE MY DAY 74J
 RED TED NONE BETTER 25J

20 EPDS	TOP%
BW+4.1	93
WW+62	1
YW+109	1
Milk+20	33
TM+41	25

AOD	BW	WW	205D	365D	MARB	REA	CWT
5	98	910	912	1590	0.3	0.18	37

19F - big long cow bull with a unique, linebred pedigree
 - added frame and performance, with a 118 Weaning Index, ranking him 3rd and 118 Yearling Index, ranking him 5th
 - top 1% of the breed growth data
 - sound, easy moving
 - 3 maternal sisters working in our herd
 - dam 104A is big and broody, heavy milking, with excellent fertility in her pedigree, with 4 sisters working in the herd
 - dam was at the top of her class for performance with WI of 115 & YI: 156

SAV HARVESTOR 0338





LA 25

RED LWNBRG BROXBURN 25F

TED 25F ~ 2062948 ~ January 13 2018

LWNBRG CROSS OVER 66B
Sire: RED LWNBRG BROXBURN 68D
 RED TED SHOCO DATA 18W

RED ANDRAS FUSION R236
Dam: RED LWNBRG FUSION 17D
 RED LWNBRG ROLLIN DEEP 135B

RED BIEBER ROLLIN DEEP Y118
 TED BISMARK 50Y
 RED SHOCO DATA 18W
 RED TED COMBINATION 40R
 RED ANDRAS IN FOCUS B175
 RED ANDRAS BELLE B167
 RED BIEBER ROLLIN DEEP Y118
 RED TED CATALYST 63Y

'19 EPDS	TOP%
BW -3.7	2
WW+44	18
YW +74	17
Milk+22	16
TM +44	13

AOD	BW	WW	205D	365D	MARB	REA	CWT
2	62	760	778	1374	0.64	0.09	26

25F - sleep at night calving ease bull with a beautiful designed front end

-top 1% BW Epd and Calving Ease

a cow maker pedigree loaded with some of our programs very best dams in Bismark 50Y and Shoco Data 18W, who was designated Premier

- heavy milking genetics

LA 32

RED LWNBRG AUTOMATIC 32F

TED 32F ~ 2065175 ~ January 13 2018

RED WHEEL DODGE CITY 61Y
Sire: RED BRYLOR AUTOMATIC 95B
 BLACK BRYLOR LAKME 155Y

RED WHEEL DODGE CITY 3U
 RED WHEEL PRIDE 29N
 HF KODIAK
 RED XXX LAKME 70M
 RED GLACIER CHATEAU 744
 RED TED RAMBLER 52L
 RED FABULOUS FRONT LINE 315N
 RED TED ROMEO 46P

RED TED CHATEAU 142Y
Dam: RED LWNBRG CHATEAU 17B
 RED TED FRONTLINE 45W

'19 EPDS	TOP%
BW+3.6	89
WW+52	5
YW +84	6
Milk+22	16
TM+48	5

AOD	BW	WW	205D	365D	MARB	REA	CWT
4	97	820	778	1347	0.27	0.48	35

LA 34

RED LWNBRG AUTOMATIC 34F

TED 34F ~ 2053378 ~ January 13 2018

RED WHEEL DODGE CITY 61Y
Sire: RED BRYLOR AUTOMATIC 95B
 BLACK BRYLOR LAKME 155Y

RED WHEEL DODGE CITY 3U
 RED WHEEL PRIDE 29N
 HF KODIAK
 RED XXX LAKME 70M
 RED SHOCO SIR ROBIN
 RED VDAR BLACKANA 303
 RED GLACIER MARIAS 548
 RED TED THE DUKE 44G

RED SHOC DATA
Dam: RED SHOCO DATA 17Z
 RED TED GLACIER MARIAS 24I

'19 EPDS	TOP%
BW+2.7	79
WW+53	4
YW +77	14
Milk+21	24
TM +45	10

AOD	BW	WW	205D	365D	MARB	REA	CWT
6	87	905	839	1334	0.23	0.43	45



32F - powerful Automatic son that will produce both pay weight and daughters that will do the same

- pedigree has as much maternal and milk as any in the breed , featuring the Elite Lakme 70M and 3 Premier cows in 45W, 52L, and 46P

RED TED CHATEAU 142Y



37



RED LWNBRG ENDZONE 37F

TED 37F ~ 2053379 ~ January 13 2018

LWNBRG CROSS OVER 66B
Sire: RED LWNBRG BROXBURN 68D
 RED TED SHOCO DATA 18W

RED BRYLOR RED KODIAK 3A
Dam: RED LWNBRG KODIAK 121C
 RED TED WANDER 119A

RED BIEBER ROLLIN DEEP Y118
 TED BISMARK 50Y
 RED SHOCO DATA
 RED TED COMBINATION 40R
 BLACK BRYLOR KODIAK 204Y
 RED BRYLOR FAYETTE 40Y
 RED GET-A-LONG WANDER 90S
 RED TED SPITFIRE 96Y

'19 EPDS	TOP%
BW -1.1	14
WW+57	2
YW +87	5
Milk+22	16
TM +51	2

AOD	BW	WW	205D	365D	MARB	REA	CWT
3	75	840	816	1474	0.31	0.17	24

37F - a definite herd bull that has a great look from any angle

- ripped with muscle front to back
- calving ease Broxburn son with structural balance and breed leading data across the board
- weaning index of 108 and yearling index at 114
- equipped with a strong outcross pedigree loaded with cows that have impressive track records

LWNBRG CROSSOVER 66B



RED LWNBRG BROXBURN 68D



RED TED SHOCO DATA



TED BISMARK 50Y



RED ANGUS



RED LWNBRG HARVESTOR 180C



RED LWNBRG FLEX 79B

38F - heifer bull from a first calf Flex 79B dam

- sire 180C was selected by Count Ridge Angus from our 2017 sale

- combines some of the heaviest milking cows we own into a maternally driven pedigree that will produce excellent females

- weaning index of 106



RED LWNBRG HARVESTOR 38F

TED 38F ~ 2062950 ~ January 13 2018

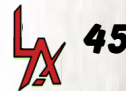
TED HARVESTOR 154A
Sire: **RED LWNBRG HARVESTOR 180C**
RED LWNBRG IVY 9Z

RED LWNBRG FLEX 79B
Dam: **RED LWNBRG FLEX 25D**
RED TED CATALYST 20Z

S A V HARVESTOR 0338
RED LWNBRG ANISTON 137S
RED SIX MILE SAKI 832S
RED TED MAKE MY DAY 215P
RED MRLA FLEX 49Z
RED TED CHATEAU 6U
RED TED CATALYST 107T
RED TED KINCHEN SAGEBRUSH 163R

	'19 EPDS	TOP%
BW	-0.3	24
WW+53	4	
YW+83	7	
Milk+20	33	
TM+47	7	

AOD	BW	WW	205D	365D	MARB	REA	CWT
2	72	790	806	1342			



RED LWNBRG FIRST DOWN 45F

TED 45F ~ 2053382 ~ January 15 2018

RED CROWFOOT 4ACES 2193Z
Sire: **RED BAR-E-L FIRST DOWN 161D**
RED BAR-E-L GLORIA 87R

RED MESSMER PACKER S008
Dam: **RED TED PACKER 134A**
RED TED RED SPREAD 174R

XO CROWFOOT 0102X
RED CROWFOOT MISS STRTCH
RED BAR-E-L APPROVAL 4L
RED BAR-E-L FIRST LADY 95J
RED MESSMER JOSHUA 019P
RED MESSMER MILLIE 124P
RED LCHMN RED SPREAD 1271F
RED TED FARGO 33L

	'19 EPDS	TOP%
BW	-1.9	8
WW+36	50	
YW +67	30	
Milk+17	75	
TM+44	13	

AOD	BW	WW	205D	365D	MARB	REA	CWT
5	79	800	822	1371	0.1	0.51	28



45

45F - smooth shouldered heifer bull with lot of length

- big bodied dam with a good foot

- Packer 134A led her calf crop in growth with a 110 WI and 127 YI

PACKER 134A



46F - a dominating performance power house that commands your attention with his tremendous length and extra substance

- top of the breed growth both at weaning and yearling with indexes at 106 and 108
- powerful cows in the maternal side of the pedigree with impeccable foot quality
- two sisters working in our herd and a brothers sold to Ken Gruninger in 2018 and Piotrowski's in 2016



46 RED LWNBRG HARVESTOR 46F

TED 46F ~ 2053385 ~ January 16 2018

TED HARVESTOR 154A
Sire: RED LWNBRG HARVESTOR 103C
 RED LWNBRG CADENCE 141Y

RED CROWFOOT OLE'S OSCAR 2042M
Dam: RED TED OLES OSCAR 1Z
 RED TED COMBINATION 60X

S A V HARVESTOR 0338 RED
 LWNBRG ANISTON 137S
 RED BLADES NATURAL 11W
 RED LWNBRG OPTIMA 100W
 RED MLK CRK CUB 722 RED
 CROWFOOT OMEGA 9179J
 RED LSF COMBINATION A301M
 RED TED MAKE MY DAY 57L

'19 EPDS	TOP%
BW+3.4	87
WW+64	1
YW+113	1
Milk+19	44
TM +51	2

AOD	BW	WW	205D	365D	MARB	REA	CWT
6	97	880	827	1450	0.47	0.31	41



47 RED LWNBRG JETSTREAM 47F

TED 47F ~ 2053384 ~ January 16 2018

LWNBRG CROSS OVER 66B
Sire: RED LWNBRG BROXBURN 68D
 RED TED SHOCO DATA 18W

RED RED BRYLOR MASTER PLAN 17M
Dam: RED TED MASTER PLAN 42T
 RED TED GLACIER MARIAS 26L

RED BIEBER ROLLIN DEEP Y118
 TED BISMARK 50Y
 RED SHOCO DATA
 RED TED COMBINATION 40R
 BLACK BASIN SENSATION 702E
 RED BRYLOR BONITA 66K
 RED GLACIER MARIAS 548
 RED TED BARNEY 3X

'19 EPDS	TOP%
BW -0.2	25
WW+46	13
YW +77	13
Milk+18	55
TM +50	3

AOD	BW	WW	205D	365D	MARB	REA	CWT
11	84	840	815	1439	0.28	0.14	16

47F - a herd bull candidate that has a powerful design and structure

- complete bull that will no doubt be a sale feature
- docile, soft made, that was a favorite all year
- Wean Index 106, Yearling Index 108
- top of the breed growth, maternal and carcass
- Elite cow family, grandam is Premier with a ratio of 106 on 10 calves
- RETAINING SEMEN INTEREST





49

49F - calving ease 103C son that has the frame to service heifers for a few years and provide above average growth - the 103C progeny had excellent calf vigor and calf health - the Fusion daughters exceed expectations in their first year with fertility, forage efficiency and milk - dam is a beautiful, dark red cow with good feet and udder, and will no doubt be a top mature cow in our herd



RED LWNBRG HARVESTOR 49F

TED 49F ~ 2062953 ~ January 16 2018

TED HARVESTOR 154A
Sire: RED LWNBRG HARVESTOR 103C
 RED LWNBRG CADENCE 141Y

RED ANDRAS FUSION R236
Dam: RED LWNBRG FUSION 96D
 RED LWNBRG ROLLIN DEEP 104B

S A V HARVESTOR 0338
 RED LWNBRG ANISTON 137S
 RED BLADES NATURAL 11W
 RED LWNBRG OPTIMA 100W
 RED ANDRAS IN FOCUS B17S
 RED ANDRAS BELLE B167
 RED BIEBER ROLLIN DEEP Y118
 RED LWNBRG BOXCAR 139X

	19 EPDS	TOP%
BW	-0.6	20
WW	+45	15
YW	+79	10
Milk	+18	55
TM	+41	27

AOD	BW	WW	205D	365D	MARB	REA	CWT
2	69	670	703	1178	0.52	0.23	35



RED LWNBRG FIRST DOWN 50F

TED 50F ~ 2053386 ~ January 17 2018

RED CROWFOOT 4ACES 2193Z
Sire: RED BAR-E-L FIRST DOWN 161D
 RED BAR-E-L GLORIA 87R

TED HARVESTOR 154A
Dam: LWNBRG HARVESTOR 79C
 RED TED MAKE MY DAY 161R

XO CROWFOOT 0102X
 RED CROWFOOT MISS STRTCH
 RED BAR-E-L APPROVAL 4L
 RED BAR-E-L FIRST LADY 95J
 S A V HARVESTOR 0338
 RED LWNBRG ANISTON 137S
 RED BJR MAKE MY DAY 981
 RED TED SPECIAL 25K

	20 EPDS	TOP%
BW	0.3	32
WW	+42	24
YW	+79	12
Milk	+16	76
TM	+36	56

AOD	BW	WW	205D	365D	MARB	REA	CWT
3	82	800	792	1450	0.08	0.5	24



50

50F - unique bull with so much shape, thickness and natural muscle, matched with a low birth weight and highly maternal pedigree - great phenotype and structural balance - weaning index of 103 and yearling index at 114 - Grandam is Premier - solid outcross genetics that will add fertility and efficiency

LWNBRG HARVESTOR 79C



54F - excellent choice for mating heifers and retaining females
 - top of the breed calving ease data and added calf vigor
 - maternal brother 148E resides at Schuld Farms

RED ANDRAS FUSION R23G



RED LWNBRG HARVESTOR 148E
 Maternal brother to Lot 54



54

RED LWNBRG BROXBURN 54F

TED 54F ~ 2053389 ~ January 17 2018

LWNBRG CROSS OVER 66B
 Sire: **RED LWNBRG BROXBURN 68D**
 RED TED SHOCCO DATA 18W

RED ANDRAS FUSION R23G
 Dam: **RED LWNBRG FUSION 114C**
 RED TED COMBINATION 51Y

RED BIEBER ROLLIN DEEP Y118
 TED BISMARCK 50Y
 RED SHOCCO DATA OSF MAF
 RED TED COMBINATION 40R
 RED ANDRAS IN FOCU B175
 RED ANDRAS BELLE B167
 RED LSF COMBINATION A301M
 RED TED KINCHEN SAGEBRUSH 70R

20 EPDS	TOP%
BW -1.6	10
WW +40	30
YW +64	37
Milk +18	55
TM +38	41

AOD	BW	WW	205D	365D	MARB	REA	CWT
3	79	740	698	1267	0.32	0.3	25



57

RED LWNBRG AUTOMATIC 57F

TED 57F ~ 2065734 ~ January 18 2018

RED WHEEL DODGE CITY 61Y
 Sire: **RED BRYLOR AUTOMATIC 95B**
 BLACK BRYLOR LAKME 155Y

RED SHOCCO DATA OSF MAF
 Dam: **RED TED SHOCCO DATA 68T**
 RED TED GRAND CANYON 31M

RED WHEEL DODGE CITY 3U
 RED WHEEL PRIDE 29N
 HF KODIAK 5R
 RED XXX LAKME 70M
 RED SHOCCO SIR ROBIN
 RED VDAR BLACKANA 303
 RED LCHMN GRND CANYON 1244G
 RED TED BJR CLEMENTIA

20 EPDS	TOP%
BW +4.0	93
WW +55	3
YW +82	9
Milk +20	33
TM +40	30

AOD	BW	WW	205D	365D	MARB	REA	CWT
11	94	800	785	1314	0.34	0.37	40

57F - supreme cow family strength
 - strong footed dam and granddam that are very fertile and forage efficient
 - 4 maternal sisters walking in the herd
 - maternal brothers sold to Powder-Creek Farms and Jerry Frey

RED LWNBRG ROLLIN DEEP 91D
 Maternal Brother



RED ANGUS



58

58F - thick , muscular, and long bod-
ied beef bull that will add pounds and
fill up the replacement pen
- as much shape and mass that you
can breed into an Angus bull
- breed leading growth, maternal and
carcass weight
- easy moving ranch bull that will check
a lot of boxes
- two maternal sisters walking in our
herd, both have heavy milk and beauti-
ful udders



RED LWNBRG ICON 58F

TED 58F ~ 2062955 ~ January 18 2018

RED RMJ REDMAN 1T OSF MAF
Sire: RED COUNT RIDGE ICON 1D
RED DELAR GOLD EDGE 2Y

RED SIX MILE SAKIC 832S
Dam: RED TED SAKIC 27Z
RED TED DAKOTA COPPER 66T

RED 5L NORSEMAN KING CROWFOOT
KURUBA 4033P O
RED GEIS PRIME RIB 411
RED DELAR GOLD EDGE 2T
RED SIX MILE AVIATOR 217P OSF
RED SIX MILE SIERA 257P RED OHRR
DAKOTA COPPER 29K
RED TED GRAND CANYON 73M

20 EPDS	TOP%
BW+0.4	35
WW+38	42
YW +64	37
Milk+23	16
TM+48	5

AOD	BW	WW	205D	365D	MARB	REA	CWT
6	84	850	804	1353	0.17	0.41	22



RED LWNBRG AUTOMATIC 59F

TED 59F ~ 2064998 ~ January 18 2018

RED WHEEL DODGE CITY 61Y
Sire: RED BRYLOR AUTOMATIC 95B
BLACK BRYLOR LAKME 155Y

RED TED CATALYST30Y
Dam: RED TED CATALYST 56A
RED TED KARWEIK 74T

RED WHEEL DODGE CITY 3U
RED WHEEL PRIDE 29N
HF KODIAK 5R
RED XXX LAKME 70M
RED TED CATALYST 107T
RED TED HOLDEN HI HO 52N
RED BRYLOR/WSP KARWEIK 1P
RED TED NEW TREND 53N

'19 EPDS	TOP%
BW+0.2	32
WW+41	30
YW +74	17
Milk+15	89
TM +33	70

AOD	BW	WW	205D	365D	MARB	REA	CWT
5	83	660	626	1236	0.1	0.5	40



59

59F - a typical Automatic son with
unbelievable depth and capacity and
the ability to sire cattle that will have
gain in the feedlot and have high end
carcass weight
- grandam 74T produced last years
high seller to Scott Stock Farms

RED TED KARWEIK 74T
with 2018 High Seller
Red LWNBRG Harvester 41E



61F - a genetically and physical-ly outstanding bull

- low input cows in his pedigree with great fertility and efficiency
- will produce durable real world females that will anchor any breeding program
- one of the best multi trait bulls in the offering
- maternal brother sold to McIntyre Ranching in 2018 and Jerry Frey in 2017



RED LWNBRG TRACTION 57E
Maternal Brother to Lot 61



RED LWNBRG CHATEAU 69B



RED LWNBRG HARVESTOR 61F

TED 61F ~ 2053391 ~ January 19 2018

TED HARVESTOR 154A
Sire: **RED LWNBRG HARVESTOR 103C**
RED LWNBRG CADENCE 141Y

RED TED CHATEAU 142Y
Dam: **RED LWNBRG CHATEAU 69B**
RED TED SPITFIRE 96Y

S A V HARVESTOR 0338
RED LWNBRG ANISTON 137S
RED BLADES NATURAL 11W
RED LWNBRG OPTIMA 100W
RED GLACIER CHATEAU 744
RED TED RAMBLER 52L
RED TED MAKE MY DAY 31R
RED TED BECTON LANCER 127N

20 EPDS	TOP%
BW+2.6	77
WW+55	4
YW+92	3
Milk+20	43
TM +34	67

AOD	BW	WW	205D	365D	MARB	REA	CWT
4	96	805	782	1362	0.29	0.34	33



RED LWNBRG BROXBURN 63F

TED 63F ~ 2053393 ~ January 20 2018

LWNBRG CROSS OVER 66B
Sire: **RED LWNBRG BROXBURN 68D**
RED TED SHOCCO DATA 18W

RED SSS ENDORSE 639X OSF MAF
Dam: **RED TR MISTY 2034Z**
RED TR MISS "T" 569U

RED BIEBER ROLLIN DEEP
RED BISMARCK 50Y
RED SHOCCO DATA
RED TED COMBINATION 40R
RED T-K ENERGIZER 13T
RED SSS BELLE 612P
RED BAR-E-L TAKE NOTICE 57N
RED SOO LINE MISS "T" 7M

20 EPDS	TOP%
BW+5.7	99
WW+63	1
YW +99	2
Milk+21	32
TM +45	10

AOD	BW	WW	205D	365D	MARB	REA	CWT
6	108	960	917	1561	0.32	0.3	25

63F - in a performance league of his own with depth, massive volume and raw pounds

- 4th ranked bull at weaning with an actual weight of 960 and a ratio of 117
- adjusted yearling weight of 1561 and a index of 112
- will sire feeder cattle that will have explosive growth, gain ability and top the market
- maternal brother Harvestor 146E was selected by McIntyre Ranching in last years sale



RED TR MISTY 2034Z



RED LWNBRG HARVESTOR 146E



RED ANGUS



LX 64

RED LWNBRG ICON 64F

TED 64F ~ 2053392 ~ January 20 2018

RED RMI REDMAN 1T OSF MAF
Sire: RED COUNT RIDGE ICON 1D
 RED DELAR GOLD EDGE 2Y

RED MESSMER PACKER S008
Dam: RED TED PACKER 117Z
 RED TED CANYON 54U

RED 5L NORSEMAN KING 2291
 CROWFOOT KURUBA 4033P
 RED GEIS PRIME RIB 411
 RED DELAR GOLD EDGE 2T
 RED MESSMER JOSHUA 019P
 RED MESSMER MILLIE 124P
 RED SODER CANYON 126M
 RED TED FARGO 28L

'19 EPDS	TOP%
BW+1.2	49
VW+46	13
YW +82	8
Milk+21	24
TM+44	13

AOD	BW	WW	205D	365D	MARB	REA	CWT
6	98	860	821	1499	0.3	0.28	19

LX 68

RED LWNBRG AUTOMATIC 68F

TED 68F ~ 2053395 ~ January 21 2018

RED WHEEL DODGE CITY 61Y
Sire: RED BRYLOR AUTOMATIC 95B
 BLACK BRYLOR LAKME 155Y

RED MRLA FLEX 49Z
Dam: RED LWNBRG FLEX 163B
 RED TED HOLLIDAY 55Y

RED WHEEL DODGE CITY 3U
 RED WHEEL PRIDE 29N
 HF KODIAK 5R
 RED XXX LAKME 70M
 MRLA 53W
 RED GET-A-LONG FIREFLY 363
 RED WEBR DOC HOLLIDAY 2N
 RED TED FRONTLINE 151W

'19 EPDS	TOP%
BW+2.2	69
VW+65	1
YW+101	1
Milk+21	24
TM+54	1

AOD	BW	WW	205D	365D	MARB	REA	CWT
4	84	850	852	1388	0.25	0.55	38



68F - a big growthy power son of Automatic 95B with a nice balance of length, depth, and muscle

- 6th ranked bull at weaning with an index of 111
- will sire the kind of feeder cattle that will grow and increase your bottom line when they go to market
- top of the breed growth data to go along with high end carcass merit



69F - First Down son with certified calving ease in his blood from both sides of the pedigree
 - proven cow making genetics with the outcross Kodiak 3A
 - clean fronted and stylish heifer bull that will make a huge impact in your replacement pen



RED LWNBRG FIRST DOWN 69F

TED 69F ~ 2053394 ~ January 21 2018

RED CROWFOOT 4ACES 2193Z
Sire: RED BAR-E-L FIRST DOWN 161D
 RED BAR-E-L GLORIA 87R

RED BRYLOR RED KODIAK 3A
Dam: RED LWNBRG KODIAK 35C
 RED XO CROWFOOT VERNICE 2453Z

XO CROWFOOT 0102X
 RED CROWFOOT MISS STRTCH
 RED BAR-E-L APPROVAL 4L
 RED BAR-E-L FIRST LADY 95J
 BLACK BRYLOR KODIAK 204Y
 RED BRYLOR FAYETTE 40Y
 RED YY EXPEDITOR 3X
 RED XO CROWFOOT VERNICE

'19 EPDS	TOP%
BW -3.7	2
WW +31	66
YW +44	82
Milk +19	44
TM +35	62

AOD	BW	WW	205D	365D	MARB	REA	CWT
3	64	730	737	1239	0.09	0.38	10



RED LWNBRG FIRST DOWN 70F

TED 70F ~ 2053398 ~ January 22 2018

RED CROWFOOT 4ACES 2193Z
Sire: RED BAR-E-L FIRST DOWN 161D
 RED BAR-E-L GLORIA 87R

RED BRYLOR FORT ROCK 34A
Dam: RED BAR 4A OPHELIA 355C
 RED U2 OPHELIA 159Z

XO CROWFOOT 0102X
 RED CROWFOOT MISS STRTCH
 RED BAR-E-L APPROVAL 4L
 RED BAR-E-L FIRST LADY 95J
 RED BRYLOR JKC FORT KNOX 100Y
 RED BEA OF KINARED 822W
 RED HOWE MAGNUM 169W
 RED U2 OPHELIA 370W

'19 EPDS	TOP%
BW +2.0	65
WW +44	18
YW +75	15
Milk +24	7
TM +46	8

AOD	BW	WW	205D	365D	MARB	REA	CWT
3	87	840	846	1389	0.06	0.44	20



70F - thick topped, packed with muscle, and as long as you can build one
 - early standout as a calf , and has an impressive wean index of 110
 - dam is a hard working ranch cow with excellent feet and udder
 - first son sold to Pelleboer Farms in last years sale
 - one of the best cow makers in the offering

RED ANGUS



RED LWNBRG CROWSNEST 71F

TED 71F ~ 2053397 ~ January 22 2018

RED SIX MILE WILD WEST 0913W
Sire: **RED SIX MILE CROWSNEST 313D**
RED SIX MILE BERRY 373X

RED GMRA PEACEMAKER 1216
Dam: **RED LWNBRG PEACEMAKER 77B**
RED TED GOLDEN BOY 119Y

RED SIX MILE MASTERMIND 854M
RED JCC ELORA 45S
RED VGW GAME PLAN 816
RED SIX MILE BERRY 435U
RED FRITZ JUSTICE 8013
RED GMRA THELMA 930
RED BHR GOLDEN BOY 453B
RED TED GLACIER MARIAS 101L

'19 EPDS	TOP%
BW+2.9	80
WW+43	21
YW+75	15
Milk+23	11
TM+ 45	11

AOD	BW	WW	205D	365D	MARB	REA	CWT
4	97	750	739	1355			



RED LWNBRG BROXBURN 78F

TED 78F ~ 2053402 ~ January 24 2018

LWNBRG CROSS OVER 66B
Sire: **RED LWNBRG BROXBURN 68D**
RED TED SHOCHO DATA 18W

RED BRYLOR AUTOMATIC 95B
Dam: **RED LWNBRG AUTOMATIC 57D**
RED TED PATRIOT 113Y

RED BIEBER ROLLIN DEEP Y118
TED BISMARK 50Y
RED SHOCHO DATA
RED TED COMBINATION 40R
RED WHEEL DODGE CITY 61Y
BLACK BRYLOR LAKME 155Y
RED TED GLACIER MARIAS 65L
RED TED BARNEY 152K

'19 EPDS	TOP%
BW -0.9	16
WW+53	4
YW +85	6
Milk+20	33
TM+47	7

AOD	BW	WW	205D	365D	MARB	REA	CWT
2	69	740	792	1226	0.39	0.16	30



RED LWNBRG AUTOMATIC 79F

TED 79F ~ 2063299 ~ January 23 2018

RED WHEEL DODGE CITY 61Y
Sire: **RED BRYLOR AUTOMATIC 95B**
BLACK BRYLOR LAKME 155Y

RED SIX MILE SAKIC 832S
Dam: **RED TED SAKIC 16Y**
RED TED LODI PRINCE 155P

RED WHEEL DODGE CITY 3U
RED WHEEL PRIDE 29N
HF KODIAK 5R
RED XXX LAKME 70M
RED SIX MILE AVIATOR 217P
RED SIX MILE SIERA 257P
RED LODI PRINCE 263Z
RED TED GLACIER MARIAS 26L

'19 EPDS	TOP%
BW+0.8	41
WW+51	6
YW +80	9
Milk+19	44
TM+45	11

AOD	BW	WW	205D	365D	MARB	REA	CWT
7	80	790	763	1428	0.17	0.42	39

71F - solid footed pedigree, backed with incredibly deep bodied cows

- 2 sisters working in our herd

- yearling index of 107

78F - calving ease Broxburn son with impressive growth stats from a first calf Automatic daughter

- pedigree jammed full of cows with picture perfect udders

- wean index of 105



RED LWNBRG AUTOMATIC 83F

TED 83F ~ 2053403 ~ January 25 2018

RED WHEEL DODGE CITY 61Y
Sire: **RED BRYLOR AUTOMATIC 95B**
BLACK BRYLOR LAKME 155Y

RED YY EXPEDITOR 3X
Dam: **RED CROWFOOT BRNDINA 2063Z**
RED CROWFOOT BRNDINA 8111U

RED WHEEL DODGE CITY 3U
RED WHEEL PRIDE 29N
HF KODIAK 5R
RED XXX LAKME 70M
RED YY EXPLORER 825U
RED HF TIBBIE 203U
RED CROWFOOT OLE'S OSCAR 2042M
RED CROWFOOT BRNDINA 6378S

'19 EPDS	TOP%
BW -2.5	5
WW+39	34
YW +64	37
Milk+20	33
TM+40	32

AOD	BW	WW	205D	365D	MARB	REA	CWT
6	69	720	701	1251	0.34	0.52	34



RED LWNBRG DEFENDER 84F

TED 84F ~ 2058322 ~ January 25 2018

RED 5L ADVOCATE 817-14W
Sire: **RED 5L DEFENDER 560-30Z**
5L BLACK ADINA 525-560

RED GET-A-LONG WANDER 905
Dam: **RED TED WANDER 47A**
RED TED CATALYST 139T

RED 5L SIGNATURE 5615
RED 5L MARTA 345-817
TC STOCKMAN 365
RED 5L ADINA 293-525
RED BUF CRK HOBO 1961
RED SSFA JOANNA 93T
RED GP CATALYST 025
RED TED ROBIN HOOD 15L

'19 EPDS	TOP%
BW -1.4	12
WW+24	88
YW +52	66
Milk+15	84
TM +27	93

AOD	BW	WW	205D	365D	MARB	REA	CWT
5	81	615	600	1264	0.4	0.35	17



83F - straight Canadian pedigree

-complete well balanced calving ease bull

- efficient dam with excellent feet and udder structure who has a son working at Wolfcreek Colony

84F - Defender son that will take zero effort to find on sale day

- long bodied, loads of dark red hair, who exploded after weaning to be the 8th ranked bull at yearling with an index of 115

- lost his dam mid summer , so he came off grass slightly behind from the rest of the group, but had little trouble catching up

- maternal brothers sold to Hays Grazing and Shuld Farms

88



RED LWNBRG AUTOMATIC 88F

TED 88F ~ 2053405 ~ January 26 2018

RED WHEEL DODGE CITY 61Y
Sire: **RED BRYLOR AUTOMATIC 95B**
BLACK BRYLOR LAKME 155Y

RED BLADES NATURAL 11W
Dam: **RED LWNBRG CADENCE 141Y**
RED LWNBRG OPTIMA 100W

RED WHEEL DODGE CITY 3U
RED WHEEL PRIDE 29N
HF KODIAK 5R
RED XXX LAKME 70M
RED BAR-E-L NATURAL 44N
RED QW HEVN'S CASSIE 38K
RED CROWFOOT OLE'S OSCAR 2042M
RED LWNBRG PEARL 18N

'19 EPDS	TOP%
BW+2.5	74
WW+64	1
YW+107	1
Milk+20	33
TM+52	2

AOD	BW	WW	205D	365D	MARB	REA	CWT
7	85	860	842	1397	0.24	0.47	45

- 88F** - a big strong Automatic son with a Canadian pedigree
 - top of the breed numbers and a weaning index of 110
 - cow family strength with the dam 141y raising a past high selling Harvester son to Andrew Johnson
 - stacked pedigree for performance, maternal, and carcass value
 - pure beef bull that will truly impact a cow herd and sire excellent females

RED LWNBRG HARVESTOR 103C
Maternal Brother of 88F



RED LWNBRG HARVESTOR 108E
Full Sister to Harvester 103C



RED LWNBRG HARVESTOR CADENCE 141Y
DAM OF LOT 88, HARVESTOR 103C & HARVESTOR 108E



RED ANGUS



94F - solid Fusion son that is hard to fault and has the making of a herd bull
 - long, thick on a easy moving frame
 - big bodied dam and grand dam that flat out produce pounds
 - Fusion daughters are in their second year of production, and are already some of the top cows in the herd with excellent fertility and milk production
 - full brother to the Fusion 69B, herd bull at Wards Red Angus, SK

94

RED LWNBRG FUSION 94F

TED 94F ~ 2053409 ~ January 27 2018

RED ANDRAS IN FOCUS B175
 Sire: **RED ANDRAS FUSION R236**
 RED ANDRAS BELLE B167

RED GMRA PEACEMAKER 1216
 Dam: **RED LWNBRG PEACEMAKER 70B**
 RED TED RED SPREAD 174R

MYTTY IN FOCUS
 RED DI ESTONIA 316
 RED ANDRAS THUNDER B105
 RED ANDRAS BELLE 416
 RED FRITZ JUSTICE 8013
 RED GMRA THELMA 930
 RED LCHMN RED SPREAD 1271F
 RED TED FARGO 33L

'19 EPDS	TOP%
BW+0.6	37
WW+41	27
YW +80	9
Milk+24	7
TM +45	11

AOD	BW	WW	205D	365D	MARB	REA	CWT
4	88	780	783	1447	0.53	0.35	36

95

RED LWNBRG ICON 95F

TED 95F ~ 2062957 ~ January 27 2018

RED RMJ REDMAN 1T
 Sire: **RED COUNT RIDGE ICON 1D**
 RED DELAR GOLD EDGE 2Y

LWNBRG CROSS OVER 66B
 Dam: **RED LWNBRG CROSSOVER 42D**
 RED TED KINCHEN SAGEBRUSH 70R

RED 5L NORSEMAN KING 2291
 CROWFOOT KURUBA 4033P
 RED GEIS PRIME RIB 411
 RED DELAR GOLD EDGE 2T
 RED BIEBER ROLLIN DEEP Y118
 TED BISMARCK 50Y
 RED KINCHEN SAGEBRUSH 487
 RED TED GLACIER MARIAS 10L

'19 EPDS	TOP%
BW+3.6	90
WW+50	8
YW +79	12
Milk+22	16
TM +44	13

AOD	BW	WW	205D	365D	MARB	REA	CWT
2	90	750	811	1354			



102

RED LWNBRG FIRST DOWN 102F

TED 102F ~ 2071208 ~ January 28 2018

RED CROWFOOT 4ACES 2193Z
 Sire: **RED BAR-E-L FIRST DOWN 161D**
 RED BAR-E-L GLORIA 87R

RED MRLA FLEX 49Z
 Dam: **RED LWNBRG FLEX 120C**
 RED TED BANK STATEMENT 51A

XO CROWFOOT 0102X
 RED CROWFOOT MISS STRTCH
 RED BAR-E-L APPROVAL 4L
 RED BAR-E-L FIRST LADY 95J
 MRLA 53W
 RED GET-A-LONG FIREFLY 363
 RED TNTS BANK STATEMENT T272
 RED TED BRANDED BEEF 83T

'19 EPDS	TOP%
BW+2.4	72
WW+41	30
YW +68	28
Milk+16	76
TM +36	53

AOD	BW	WW	205D	365D	MARB	REA	CWT
3	66	700	729	1271	0.12	0.73	25

102F - sure fire calving ease, that will add value with his length and calf vigor through out the pedigree
 - First Down calves come small and hit the ground running
 - long bodied, good shape and muscle, on a moderate frame, should be able to mate heifers for several years

LX 105 RED LWNBRG AUTOMATIC 105F

TED 105F ~ 2063316 ~ January 29 2018

RED WHEEL DODGE CITY 61Y
Sire: **RED BRYLOR AUTOMATIC 95B**
BLACK BRYLOR LAKME 155Y

RED LAZY MC COWBOY CUT 26U
Dam: **RED TED SAKIC 22A**
RED TED SAKIC 16Y

RED WHEEL DODGE CITY 3U
RED WHEEL PRIDE 29N
HF KODIAK 5R
RED XXX LAKME 70M
RED LAZY MC STOUT 30S
RED LAZY MC STAR 185M
RED SIX MILE SAKIC 832S
RED TED LODI PRINCE 155P

'19 EPDS	TOP%
BW+3.8	91
WW+58	2
YW+95	2
Milk+14	90
TM +43	16

AOD	BW	WW	205D	365D	MARB	REA	CWT
5	93	775	768	1460	0.14	0.51	42

LX 107 RED LWNBRG HARVESTOR 107F

TED 107F ~ 2053417 ~ January 30 2018

TED HARVESTOR 154A
Sire: **RED LWNBRG HARVESTOR 103C**
RED LWNBRG CADENCE 141Y

RED ANDRAS FUSION R236
Dam: **RED LWNBRG FUSION 5D**
RED TED CATALYST 20W

S A V HARVESTOR 0338
RED LWNBRG ANISTON 137S
RED BLADES NATURAL 11W
RED LWNBRG OPTIMA 100W
RED ANDRAS IN FOCUS B17S
RED ANDRAS BELLE B167
RED TED CATALYST 107T
RED TED HOBO 76H

'19 EPDS	TOP%
BW -0.7	19
WW+43	21
YW +78	12
Milk+17	66
TM +39	38

AOD	BW	WW	205D	365D	MARB	REA	CWT
2	70	620	691	1207	0.45	0.23	36

107F - heifer bull prospect from a cow family that does nothing but produce calving ease genetics

RED LWNBRG FUSION 5D - DAM OF 107F



LX 108 RED LWNBRG HARVESTOR 108F

TED 108F ~ 2060746 ~ January 30 2018

TED HARVESTOR 154A
Sire: **RED LWNBRG HARVESTOR 103C**
RED LWNBRG CADENCE 141Y

RED FABULOUS FRONT LINE 315N
Dam: **RED TED FRONT LINE 50W**
RED TED CATALYST 139T

S A V HARVESTOR 0338
RED LWNBRG ANISTON 137S
RED BLADES NATURAL 11W
RED LWNBRG OPTIMA 100W
RED MEADOW CK 904 52K
RED CRESCENT CREEK ANNIE 1G
RED GP CATALYST 025
RED TED ROBIN HOOD 15L

'19 EPDS	TOP%
BW+6.4	99
WW+66	1
YW+112	1
Milk+20	40
TM +53	1

AOD	BW	WW	205D	365D	MARB	REA	CWT
9	118	740	737	1381	0.31	0.23	28

108F - power beef bull loaded with substance , bone and muscle

LX 115 RED LWNBRG FUSION 115F

TED 115F ~ 2053418 ~ February 01 2018

RED ANDRAS FUSION R236
Sire: **RED LWNBRG FUSION 40D**
RED LWNBRG PEACEMAKER 92B

RED MRLA FLEX 49Z
Dam: **RED LWNBRG FLEX 177D**
RED TED GRAND CANYON 53R

RED ANDRAS IN FOCUS B17S
RED ANDRAS BELLE B167
RED GMRA PEACEMAKER 1216
RED TED NEW TREND 108P
MRLA 53W
RED GET-A-LONG FIREFLY 363
RED LCHMN GRND CANYON 1244G
RED TED HOLDEN HI HO 77K

'19 EPDS	TOP%
BW+0.8	43
WW+32	66
YW +61	44
Milk+21	32
TM +35	59

AOD	BW	WW	205D	365D	MARB	REA	CWT
2	72	640	717	1259			

115F - sure fire calving ease bull whose sire sold to Powder Creek in 2017

- long bodied, smooth fronted , bred to mate heifers



LX 116 RED LWNBRG HARVESTOR 116F

TED 116F ~ 2053423 ~ February 02 2018

TED HARVESTOR 154A
Sire: **RED LWNBRG HARVESTOR 103C**
RED LWNBRG CADENCE 141Y

RED BIR AH BRANDED BEEF L107
Dam: **RED TED BRANDED BEEF 83T**
RED TED GLACIER MARIAS 101L

S A V HARVESTOR 0338
RED LWNBRG ANISTON 137S
RED BLADES NATURAL 11W
RED LWNBRG OPTIMA 100W
RED BADLANDS MR BEEF 80S
RED HR ROBIN HOOD 80J ET
RED GLACIER MARIAS 548
RED TED LA ROUX DESIGN

'19 EPDS	TOP%
BW+0.2	31
WW+54	4
YW +90	3
Milk+22	16
TM +49	3

AOD	BW	WW	205D	365D	MARB	REA	CWT
11	78	790	824	1387	0.36	0.15	34

116F - valuable calving ease bull with an attractive front end and smooth shoulder

- dam was designated Premier, and we have a son retained that bred heifers for 3 years, and left excellent replacement females



117

117F - packed with muscle and volume on a moderate frame
 - dam produced herd bulls working at Count Ridge Angus and McIntyre Ranching

RED SIXM CROWSNEST 313D



LX 117 RED LWNBRG CROWSNEST 117F
 TED 117F ~ 2053422 ~ February 02 2018

RED SIX MILE WILD WEST 0913W
Sire: RED SIX MILE CROWSNEST 313D
 RED SIX MILE BERRY 373X

RED SIX MILE SAKIC 832S
Dam: RED LWNBRG IVY 9Z
 RED TED MAKE MY DAY 215P

RED SIX MILE MASTERMIND 854M
 RED JCC ELORA 45S
 RED VGW GAME PLAN 816
 RED SIX MILE BERRY 435U
 RED SIX MILE AVIATOR 217P
 RED SIX MILE SIERA 257P
 RED TED MAKE MY DAY 74J
 RED TED NONE BETTER 25J

'19 EPDS	TOP%
BW+1.2	49
WW+40	30
YW +66	32
Milk+21	24
TM+41	25

AOD	BW	WW	205D	365D	MARB	REA	CWT
6	85	710	716	1360			

LX 118 RED LWNBRG ELECTRIC 118F
 TED 118F ~ 2053426 ~ February 02 2018

RED ANDRAS FUSION R236
Sire: RED LWNBRG ELECTRIC 4D
 RED LWNBRG SCARLET 62Z

RED BHR GOLDEN BOY 453B
Dam: RED TED GOLDEN BOY 56Y
 RED TED MAKE MY DAY 80M

RED ANDRAS IN FOCUS B175
 RED ANDRAS BELLE B167
 RED LAZY MC COWBOY CUT 26U
 RED TED GRAND CANYON 144R
 RED LMB GOLDEN BOY 719
 RED MISS BHR LOGAN 017
 RED BJR MAKE MY DAY 981
 RED TED BOOM BOOM 67G

'19 EPDS	TOP%
BW -0.4	22
WW+50	7
YW +92	3
Milk+16	76
TM +40	32

AOD	BW	WW	205D	365D	MARB	REA	CWT
7	86	740	746	1370	0.28	0.3	24



118

118F - one of the most complete bulls in the offering
 - sound structured, and balanced with a herd bull look
 - dam is a phenotypic stand-out, with a beauty udder and feet
 - she has 2 daughters working in the herd
 - her son was a sale feature last year to Wolfcreek Colony

RED TED GOLDEN BOY 56Y



120F - a docile hard to miss First Down son
 - dam is an efficient, real world ranch cow, with a son selected by Crystal Springs Colony in 2018

RED LWNBRG HARVESTOR 41C



LX 120 RED LWNBRG FIRST DOWN 120F
 TED 120F ~ 2053424 ~ February 02 2018

RED CROWFOOT 4ACES 2193Z
 Sire: **RED BAR-E-L FIRST DOWN 161D**
 RED BAR-E-L GLORIA 87R

TED HARVESTOR 154A
 Dam: **RED LWNBRG HARVESTOR 41C**
 RED TED KINCHEN SAGEBRUSH 163R

XO CROWFOOT 0102X
 RED CROWFOOT MISS STRTCH
 RED BAR-E-L APPROVAL 4L
 RED BAR-E-L FIRST LADY 95J
 S A V HARVESTOR 0338
 RED LWNBRG ANISTON 137S
 RED KINCHEN SAGEBRUSH 487
 RED TED BASIN DRIFTER 95M

'19 EPDS	TOP%
BW+2.7	77
WW+38	38
YW +64	37
Milk+16	76
TM +35	59

AOD	BW	WW	205D	365D	MARB	REA	CWT
3	92	700	744	1293	0.08	0.35	14

LX 123 RED LWNBRG AUTOMATIC 123F
 TED 123F ~ 2053427 ~ February 03 2018

RED WHEEL DODGE CITY 61Y
 Sire: **RED BRYLOR AUTOMATIC 95B**
 BLACK BRYLOR LAKME 155Y

RED SIX MILE SAKIC 832S
 Dam: **RED TED SAKIC 41Z**
 RED TED OLES OSCAR 121X

RED WHEEL DODGE CITY 3U
 RED WHEEL PRIDE 29N
 HF KODIAK 5R
 RED XXX LAKME 70M
 RED SIX MILE AVIATOR 217P
 RED SIX MILE SIERA 257P
 RED CROWFOOT OLE'S OSCAR 2042M
 RED TED GRAND CANYON 124T

'19 EPDS	TOP%
BW+3.5	88
WW+60	1
YW +99	1
Milk+22	16
TM+ 52	2

AOD	BW	WW	205D	365D	MARB	REA	CWT
6	91	800	811	1305	0.27	0.38	47

123F - Automatic sure stamps his calves with remarkable depth and volume
 - pound producing bull that will sire scale crushing calves at weaning, and again as a finished product
 - cow family with heavy milk and added frame size



RED ANGUS



129



128

RED LWNBRG ELECTRIC 128F

TED 128F ~ 2053429 ~ February 06 2018

RED ANDRAS FUSION R236
Sire: RED LWNBRG ELECTRIC 4D
 RED LWNBRG SCARLET 62Z

RED ANDRAS IN FOCUS B175
 RED ANDRAS BELLE B167
 RED LAZY MC COWBOY CUT 26U
 RED TED GRAND CANYON 144R
 RED LCHMAN COPPER ROB 1204D
 RED MESSMER OPHELIA 950Z
 RED BJR MAKE MY DAY 981
 RED TED BLAZE CHARLOTTE 2B

RED OHRR DAKOTA COPPER 29K
Dam: RED TED DAKOTA COPPER 103T
 RED TED MAKE MY DAY 67L

'19 EPDS	TOP%
BW -1.9	8
WW +45	15
YW +78	12
Milk +19	44
TM +42	22

AOD	BW	WW	205D	365D	MARB	REA	CWT
11	76	670	715	1176	0.29	0.3	31



RED SIXMILE WALK OFF 177B



129

RED LWNBRG HARVESTOR 129F

TED 129F ~ 2062959 ~ February 07 2018

TED HARVESTOR 154A
Sire: RED LWNBRG HARVESTOR 103C
 RED LWNBRG CADENCE 141Y

S A V HARVESTOR 0338
 RED LWNBRG ANISTON 1375
 RED BLADES NATURAL 11W
 RED LWNBRG OPTIMA 100W
 RED SIX MILE GRAND SLAM 130Z
 RED SIX MILE CHETA 381Z
 RED LWNBRG IMPACT 91Z
 RED TED MAKE MY DAY 57L

RED SIX MILE WALK OFF 177B
Dam: RED LWNBRG WALK OFF 93D
 RED LWNBRG IMPACT 96B

'19 EPDS	TOP%
BW +2.3	71
WW +50	7
YW +91	3
Milk +20	33
TM +42	22

AOD	BW	WW	205D	365D	MARB	REA	CWT
2	86	670	765	1375	0.22	0.33	31



129F - excellent footed and uddered cow family that are more moderate in size
 - yearling index of 106
 - very balanced and packed with muscle



130

RED LWNBRG FIRST DOWN 130F

TED 130F ~ 2053433 ~ February 07 2018

RED CROWFOOT 4ACES 2193Z
Sire: RED BAR-E-L FIRST DOWN 161D
 RED BAR-E-L GLORIA 87R

XO CROWFOOT 0102X
 RED CROWFOOT MISS STRTCH
 RED BAR-E-L APPROVAL 4L
 RED BAR-E-L FIRST LADY 95J
 RED ANDRAS IN FOCUS B175
 RED ANDRAS BELLE B167
 RED TED CATALYST 107T
 RED TED FRONTLINE 45W

RED ANDRAS FUSION R236
Dam: RED LWNBRG FUSION 73C
 RED TED CATALYST 27Y

'19 EPDS	TOP%
BW +0.1	29
WW +33	58
YW +57	54
Milk +16	76
TM +33	73

AOD	BW	WW	205D	365D	MARB	REA	CWT
3	80	660	719	1220	0.23	0.43	17



130

130F - stout made, calving ease bull that is perfect for the heifer pen
 - the First Down's have great calf vigor, and develop great shape at an early age
 - sound structured pedigree



137

RED LWNBRG HARVESTOR 137F

TED 137F ~ 2053436 ~ February 09 2018

TED HARVESTOR 154A
Sire: RED LWNBRG HARVESTOR 103C
 RED LWNBRG CADENCE 141Y

S A V HARVESTOR 0338
 RED LWNBRG ANISTON 1375
 RED BLADES NATURAL 11W
 RED LWNBRG OPTIMA 100W
 RED LCC HEAVEN OR BUST1000B
 RED GLACIER REBALAS
 RED CROWFOOT OLE'S OSCAR 2042M
 RED TED BASIN DRIFTER 114L

RED GLACIER MARIAS 548
Dam: RED TED PATRIOT 41Z
 RED TED OLE'S OSCAR 83W

'19 EPDS	TOP%
BW +3.7	90
WW +48	10
YW +87	5
Milk +20	33
TM +44	13

AOD	BW	WW	205D	365D	MARB	REA	CWT
6	98	715	743	1313	0.34	0.24	33

139F - one of the very best heifer bull's in the offering
 - added length, smooth front end, and great hair
 - weaning ratio of 108
 - cow family has incredible fertility and milk production
 - maternal brother sold to Spring View Colony in 2018 that we retained semen interest in



LX 139 RED LWNBRG CROWSNEST 139F
 TED 139F ~ 2053438 ~ February 10 2018

RED SIX MILE WILD WEST 0913W
Sire: RED SIX MILE CROWSNEST 313D
 RED SIX MILE BERRY 373X

RED SIX MILE MASTERMIND 854M
 RED JCC ELORA 45S
 RED VGW GAME PLAN 816
 RED SIX MILE BERRY 435U
 BLACK BRYLOR KODIAK 204Y
 RED BRYLOR FAYETTE 40Y
 RED GET-A-LONG WANDER 90S
 RED TED GLACIER MARIAS 40X

'19 EPDS	TOP%
BW -1.6	10
WW +48	10
YW +73	19
Milk +25	5
TM +49	3

AOD	BW	WW	205D	365D	MARB	REA	CWT
3	70	740	812	1341			

LX 153 RED LWNBRG BROXBURN 153F
 TED 153F ~ 2053444 ~ February 16 2018

LWNBRG CROSS OVER 66B
Sire: RED LWNBRG BROXBURN 68D
 RED TED SHOCHO DATA 18W

RED BIEBER ROLLIN DEEP Y118
 TED BISMARK 50Y
 RED SHOCHO DATA
 RED TED COMBINATION 40R
 RED BASIN SENSATION 702E
 RED BRYLOR BONITA 66K
 RED BADLANDS BONUS 702
 RED TED MAJESTA REDFORD 57D

'19 EPDS	TOP%
BW -0.1	27
WW +39	34
YW +69	28
Milk +16	84
TM +33	70

AOD	BW	WW	205D	365D	MARB	REA	CWT
12	89	630	703	1299	0.28	0.05	17

86D - Maternal Brother



60E - Maternal Brother



RED LWNBRG ANISTON 137S



RED ANGUS



RED LWNBRG VOLTAGE 154F

TED 154F ~ 2053443 ~ February 16 2018

RED ANDRAS FUSION R236
Sire: RED LWNBRG ELECTRIC 4D
 RED LWNBRG SCARLETT 62Z

RED TED CATALYST 30Y
Dam: RED LWNBRG CATALYST 68B
 RED TED MAKE MY DAY 161R

RED ANDRAS IN FOCUS B175
 RED ANDRAS BELLE B167
 RED LAZY MC COWBOY CUT 26U
 RED TED GRAND CANYON 144R
 RED TED CATALYST 107T
 RED TED HOLDEN HI HO 52N
 RED BJR MAKE MY DAY 981
 RED TED SPECIAL 25K

	'19 EPDS	TOP%
BW	-1.5	11
VW	+61	1
YW	+104	1
Milk	+18	55
TM	+49	4

AOD	BW	WW	205D	365D	MARB	REA	CWT
4	80	770	844	1434	0.17	0.41	33

154F - Electric 4D really impressed us with his ability to consistently stamp his progeny with muscle, bone and a bold rib - herd bull candidate that could go on heifers or cows - top of the breed growth, calving, maternal and carcass weight - maternally charged pedigree that could really push a cow herd forward with fertility and longevity - his dam has a perfect udder, good feet and has 2 sons working at Powder Creek and J Bar C Ranching

RED LWNBRG ELECTRIC 4D



RED ANDRAS FUSION



RED LWNBRG SCARLETT 62Z



RED ANGUS

156

156F - an Icon son designed for the heifer pen with a great head, shoulders and neck extension - long bodied and lots of natural muscle almost a replica of his sire - dam is a beautiful uddered cow with very good feet



RED LWNBRG ROLLIN DEEP 90B
Grandsire to 156F



LX 156 RED LWNBRG ICON 156F
TED 156F ~ 2053445 ~ February 17 2018

RED RMJ REDMAN 1T
Sire: **RED COUNT RIDGE ICON 1D**
RED DELAR GOLD EDGE 2Y

RED LWNBRG ROLLIN DEEP 90B
Dam: **RED LWNBRG ROLLIN DEEP 92D**
RED TED OLES OSCAR 1Z

RED 5L NORSEMAN KING 2291
CROWFOOT KURUBA 4033P
RED GEIS PRIME RIB 411 F
RED DELAR GOLD EDGE 2T
RED BIEBER ROLLIN DEEP Y118
RED TED KINCHEN SAGEBRUSH 74R
RED CROWFOOT OLE'S OSCAR 2042M
RED TED COMBINATION 60X

'19 EPDS	TOP%
BW -0.7	19
WW+36	46
YW +67	30
Milk+22	16
TM +40	30

AOD	BW	WW	205D	365D	MARB	REA	CWT
2	74	640	765	1348			

LX 158 RED LWNBRG CROWSNEST 158F
TED 158F ~ 2053447 ~ February 19 2018

RED SIX MILE WILD WEST 0913W
Sire: **RED SIX MILE CROWSNEST 313D**
RED SIX MILE BERRY 373X

RED MRLA FLEX 49Z
Dam: **RED LWNBRG FLEX 131C**
CROWFOOT CLASSIC 6386S

RED SIX MILE MASTERMIND 854M
RED JCC ELORA 45S OSF
RED VGW GAME PLAN 816
RED SIX MILE BERRY 435U
MRLA 53W
RED GET-A-LONG FIREFLY 363
B.B.A.R. NUGGET 4778
CROWFOOT RED VIEW 3148N

'19 EPDS	TOP%
BW+2.8	79
WW+42	24
YW +68	28
Milk+23	11
TM +44	13

AOD	BW	WW	205D	365D	MARB	REA	CWT
3	87	700	801	1275			

LX 160 RED LWNBRG CROWSNEST 160F
TED 160F ~ 2053449 ~ February 21 2018

RED SIX MILE WILD WEST 0913W
Sire: **RED SIX MILE CROWSNEST 313D**
RED SIX MILE BERRY 373X

TED HARVESTOR 108A
Dam: **LWNBRG HARVESTOR 44C**
RED TED MONU 189T

RED SIX MILE MASTERMIND 854M OSF MAF
RED JCC ELORA 45S
RED VGW GAME PLAN 816
RED SIX MILE BERRY 435U
S A V HARVESTOR 0338
RED LWNBRG BOXCAR 139X
RED BJR MONU 4X-303 OSF

'19 EPDS	TOP%
BW+0.7	39
WW+36	46
YW +61	44
Milk+21	24
TM +39	35

AOD	BW	WW	205D	365D	MARB	REA	CWT
3	79	605	703	1232			

LX 168 RED LWNBRG ICON 168F
TED 168F ~ 2063314 ~ March 03 2018

RED RMJ REDMAN 1T
Sire: **RED COUNT RIDGE ICON 1D**
RED DELAR GOLD EDGE 2Y

RED GET-A-LONG WANDER 90S
Dam: **RED LWNBRG WANDER 47C**
RED TED MAX 133A

RED 5L NORSEMAN KING 2291
CROWFOOT KURUBA 4033P
RED GEIS PRIME RIB 411
RED DELAR GOLD EDGE 2T
RED BUF CRK HOBO 1961
RED SSFA JOANNA 93T
RED RCR MAX 262Y
RED TED KINCHEN SAGEBRUSH 70R

'19 EPDS	TOP%
BW -3.1	4
WW+24	87
YW +45	80
Milk+19	44
TM+30	84

AOD	BW	WW	205D	365D	MARB	REA	CWT
3	68	560	686	1174	0.21	0.35	10

LX 169 RED LWNBRG ICON 169F
TED 169F ~ 2053453 ~ March 04 2018

RED RMJ REDMAN 1T OSF MAF
Sire: **RED COUNT RIDGE ICON 1D**
RED DELAR GOLD EDGE 2Y

RED BIEBER ROLLIN DEEP Y118
Dam: **RED LWNBRG ROLLIN DEEP 104B**
RED LWNBRG BOXCAR 139X

RED 5L NORSEMAN KING 2291
CROWFOOT KURUBA 4033P
RED GEIS PRIME RIB 411
RED DELAR GOLD EDGE 2T
RED BIEBER ROOSEVELT W384
RED BIEBER TILLY 399W
RED CROWFOOT OLE'S OSCAR 2042M
RED TED KINCHEN SAGEBRUSH 164P

'19 EPDS	TOP%
BW -0.3	24
WW+22	91
YW +44	82
Milk+21	24
TM +32	75

AOD	BW	WW	205D	365D	MARB	REA	CWT
4	81	530	629	1151	0.38	0.37	18



33

LWNBRG BALDRIDGE COMMAND 33F

TED 33F ~ 2058314 ~ January 13 2018

EF COMMANDO 1366
Sire: BALDRIDGE COMMAND C036
 BALDRIDGE BLACKBIRD A030

EF COMPLEMENT 8088
 RIVERBEND YOUNG LUCY
 HOOVER DAM
 BALDRIDGE BLACKBIRD X89
 BON VIEW NEW DESIGN 1407
 LCC SUNSET K3118
 S A V NET WORTH 4200
 TED REVIVAL 113P

LCC NEW STANDARD
Dam: TED NEW STANDARD 29Z
 TED NET WORTH 14X

'19 EPDS	TOP%
BW+2.1	48
WW+68	1
YW+128	1
Milk+33	1
TM+63	1

AOD	BW	WW	205D	365D	MARB	REA	CWT
6	93	1000	927	1612	0.59	0.26	31



33F - absolute beast of a bull that crunched the scale down at weaning and yearling
 - top of the breed stat line with as a good a cow family as we could breed
 - he will sire the pounds you need
 - #1 ranked bull at weaning for an index of 121 and the 4th ranked bull at yearling indexing at 119
 - maternal brother was selected by the Heins' in 2018



48

LWNBRG RESERVE 48F

TED 48F ~ 2053383 ~ January 16 2018

S A V RESOURCE 1441
Sire: LWNBRG RESERVE 163C
 TED IN FOCUS 16W

RITO 707 OF IDEAL 3407 7075
 S A V BLACKCAP MAY 4136
 MYTTY IN FOCUS
 VWB PRIDE LADY 124T
 VISIONTOPLINE ROYAL STOCKMAN
 VISION EDELLA 665
 S A V NET WORTH 4200
 TED REVIVAL 113P

VISION UNANIMOUS 1418
Dam: LWNBRG UNANIMOUS 133C
 TED NET WORTH 14X

'19 EPDS	TOP%
BW+3.2	71
WW+72	1
YW+129	1
Milk+25	12
TM+61	2

AOD	BW	WW	205D	365D	MARB	REA	CWT
3	87	940	920	1571	0.72	0.48	49

48F - a Reserve 163C son that will produce calves that will slam the scale down, and produce females that will be in a herd a long time
 - 2nd ranked bull at weaning with an index of 121 and yearling at 113
 - has that herd bull presence and profile, he won't be hard to find in the pen
 - full brother was also a power house and sold to Spring view Colony in last years sale



92

LWNBRG OFF ROAD 92F

TED 92F ~ 2053407 ~ January 27 2018

RED WHEEL DODGE CITY 61Y
Sire: RED BRYLOR AUTOMATIC 95B
 BLACK BRYLOR LAKME 155Y

RED WHEEL DODGE CITY 3U
 RED WHEEL PRIDE 29N
 HF KODIAK 5R
 RED XXX LAKME 70M
 S A V 8180 TRAVELER 004
 S A V MAY 2410
 RED TED CATALYST 107T
 RED TED HOBBO 76H

S A V NET WORTH 4200
Dam: TED NETWORTH 68A
 RED TED CATALYST 20W

'19 EPDS	TOP%
BW+3.5	88
WW+58	2
YW+100	1
Milk+19	44
TM+48	5

AOD	BW	WW	205D	365D	MARB	REA	CWT
5	96	800	787	1492	0.32	0.43	41

92F - beautiful angular dam that has a picture perfect udder and feet with 4 maternal sisters working in the herd
 - #1 ranked bull at yearling with a ratio of 122
 - big powerful bull with length, bone, top end thickness and mass



LWNBGR CROSSOVER 138F

TED 138F ~ 2053437 ~ February 10 2018

RED BIEBER ROLLIN DEEP Y118
Sire: **LWNBGR CROSS OVER 66B**
TED BISMARCK 50Y

S A V RESOURCE 1441
Dam: **LWNBGR RESOURCE 56C**
VWB PRIDE LADY 124T

RED BIEBER ROOSEVELT W384
RED BIEBER TILLY
S A V BISMARCK 5682
TED COMMANDER 26W
RITO 707 OF IDEAL 3407 7075
S A V BLACKCAP MAY 4136
RAINBOW HILLS PRIME CUT 114P
PRIDE LADY OF RAINBOW HILLS

19 EPDS	TOP%
BW -2.7	1
WW+48	45
YW +78	55
Milk+24	25
TM +47	33

AOD	BW	WW	205D	365D	MARB	REA	CWT
3	69	710	781	1344	0.47	0.42	36

138F - calving ease Crossover son that reminds me so much of his impressive sire - what outstanding females he left us

- he will add calf vigor and superior maternal traits



138

CROSSOVER 66B



LWNBGR RESERVE 155F

TED 155F ~ 2062962 ~ February 17 2018

S A V RESOURCE 1441
Sire: **LWNBGR RESERVE 163C**
TED IN FOCUS 16W

S A V BISMARCK 5682
Dam: **TED BISMARCK 50Y**
TED COMMANDER 26W

RITO 707 OF IDEAL 3407 7075
S A V BLACKCAP MAY 4136
MYTTY IN FOCUS
VWB PRIDE LADY 124T
G A R GRID MAKER
S A V ABIGALE 0451
BORDER BUTTE COMMANDER 69'06
TED STOCKMAN 157P

19 EPDS	TOP%
BW+0.6	17
WW+48	41
YW +92	26
Milk+23	25
TM +47	33

AOD	BW	WW	205D	365D	MARB	REA	CWT
7	83	700	756	1176	0.49	0.58	38

155F - cow maker from both sides of the pedigree

- will produce the kind of females that will be fertile, productive, and fault free

- moderate birth weight bull that could be used on heifers



155

TED BISMARCK 50Y



LWNBGR RESERVE 157F

TED 157F ~ 2053446 ~ February 18 2018

S A V RESOURCE 1441
Sire: **LWNBGR RESERVE 163C**
TED IN FOCUS 16W

S A V POTENTIAL 0205
Dam: **LWNBGR POTENTIAL 27B**
BLACKBIRD OF RAINBOW HILLS 50S

RITO 707 OF IDEAL 3407 7075
S A V BLACKCAP MAY 4136
MYTTY IN FOCUS
VWB PRIDE LADY 124T
S A V PIONEER 7301
S A V ELBA 7021
RAINBOW HILLS PRIME CUT 114P
BLACKBIRD RAINBOW HILLS 145C

19 EPDS	TOP%
BW+0.7	20
WW+54	24
YW+102	12
Milk+27	8
TM +52	13

AOD	BW	WW	205D	365D	MARB	REA	CWT
4	86	790	874	1552	0.55	0.59	36

157F - genuine beef bull with herd bull profile and gentle disposition

- front pasture dam with a perfect udder

- full brother was a sale feature to Black Coulee Ranch in 2018

- grandam is still in the herd at 14 years of age and is the model of efficiency and fertility



157

LWNBGR POTENTIAL 27B

EXTRA AGE BULLS



173



173

RED LWNBRG HARVESTOR 173E

TED 173E ~ 2003061 ~ June 22 2017

S A V HARVESTOR 0338
Sire: **TED HARVESTOR 154A**
RED LWNBRG ANISTON 137S

RED BIEBER ROLLIN DEEP Y118
Dam: **RED LWNBRG ROLLIN DEEP 111C**
RED TED SAKIC 103W

S A V HERITAGE 6295
S A V EMBLYNETTE 7749
RED BRYLOR MASTER PLAN 17M
RED TED FARGO 33L
RED BIEBER ROOSEVELT W384
RED BIEBER TILLY 399W
RED SIX MILE SAKIC 832S
RED TED GLACIER MARIAS 24L

'19 EPDS	TOP%
BW+2.9	80
WW+58	2
YW +96	2
Milk+21	24
TM +50	3

AOD	BW	WW	205D	YW	MARB	REA	CWT
2	90	715	849	1275	0.39	0.07	31

173E - a valuable breeding piece with outcross genetics and extra age

- packed with muscle, long as a train, in an athletic package
- top of the breed growth data

174

S A V HARVESTOR 0338
Sire: **TED HARVESTOR 154A**
RED LWNBRG ANISTON 137S

RED GLACIER MARIAS 548
Dam: **RED TED PATRIOT 112Z**
RED LWNBRG PEARL 18N

RED LWNBRG HARVESTOR 174E

TED 174E ~ 2074168 ~ June 26 2017

'19 EPDS	TOP%
BW+2.6	75
WW+45	15
YW +81	9
Milk+18	55
TM +41	27

AOD	BW	WW	205D	YW	MARB	REA	CWT
5	88	685	757	1270	0.25	0.28	29



175

RED LWNBRG HARVESTOR 175E

TED 175E ~ 2003063 ~ June 27 2017

S A V HARVESTOR 0338
Sire: **TED HARVESTOR 154A**
RED LWNBRG ANISTON 137S

RED ANDRAS FUSION R236
Dam: **RED LWNBRG FUSION 117C**
RED TED SAKIC 29Y

S A V HERITAGE 6295
S A V EMBLYNETTE 7749
RED BRYLOR MASTER PLAN 17M
RED TED FARGO 33L
RED ANDRAS IN FOCUS B175
RED ANDRAS BELLE B167
RED SIX MILE SAKIC 832S
RED TED NEW TREND 11L

'19 EPDS	TOP%
BW+1.7	59
WW+46	13
YW +88	4
Milk+18	55
TM +41	25

AOD	BW	WW	205D	YW	MARB	REA	CWT
2	85	610	750	1235	0.36	0.3	32



175

175E - herd bull S A V Harvestor 0338 descendant that is equally impressive as any of his brothers we sold in the past

- complete cow making pedigree
- the 154A daughters are exceptional and the Fusion's have been impressive in their first year
- dam is very deep sided, sound cow, with a good udder
- great grand dam had 14 natural calves and never missed
- outcross genetics that will advance a cow herd and have a lasting impact on a breeding program

Thank You to all of our valued Customers who have supported our program to date!

- | | |
|---------------------------|---------------------------|
| Albion Ridge Colony* | D & C Matsugi* |
| Rick Arthur* | John & Sheila Mazutinec* |
| John Balderson* | M Bar Ranch Ltd.* |
| Black Acre Farms* | McIntyre Ranch |
| Black Coulee Ranching | McGowan Farms |
| Blue Ridge Colony* | Milk River Bull Club |
| Count Ridge Angus* | Moens Farms* |
| Mathew Beckman* | North Fork Farms* |
| Black Acre Farms* | Park Livestock* |
| Blue Ridge Colony* | Highline Angus* |
| Cameron Farms* | |
| CCRA Ranching* | |
| Crystal Spring Colony* | |
| Jeff Cope | |
| East Raymond Colony* | Pelleboer Farms Ltd* |
| Fath Farms* | Powder Creek Farms* |
| Fred McGlynn | C.Rooke Ranching |
| Jerry Fre | Rock Lake Farming |
| Melinda French | Scott Stock Farms |
| Goat River Farms | Schuld Farms Ltd. |
| John Haarman* | Spring View Colony |
| John Hofer* | Soderglen Ranches |
| J Bar C Ranching* | Three T Farms |
| Hays Stock Grazing Co-op* | Trautman Cattle Co.* |
| Peter Heins & Sons* | Martin Van Reeuwijk* |
| Martin & Sheila Hilmer* | Conrad Van Hierden* |
| Merlin Huber* | William & Kendra Waldner* |
| Keho Lake Colony* | Wards Red Angus |
| Mayfield Colony* | Wilson Ranch Ltd |
| Ken Gruninger* | Wolf Creek Farming* |
| Lakeside Colony* | |
| Lomond Grazing Assoc.* | |
| Lost River Ranches Ltd | |

* Repeat Buyers



LWNBRG HARVESTOR 170E

TED 170E ~ 2074185 ~ June 19 2017

S A V HARVESTOR 0338
Sire: **TED HARVESTOR 154A**
RED LWNBRG ANISTON 137S

S A V HERITAGE
S A V EMBLYNETTE 7749
RED BRYLOR MASTER PLAN 17M
RED TED FARGO 33L
LCC NEW STANDARD
TED SITZ ALLIANCE 31S
MILLCREEK DIVERSITY
MVF FAVORITE 209M

'19 EPDS	TOP%
BW+2.4	53
WW+61	8
YW+105	9
Milk+22	34
TM +53	12

TED NEW STANDARD 92Z
Dam: **LWNBRG NEW STANDARD 130B**
TED MILK CREEK DIVERSITY 85R

AOD	BW	WW	205D	YW	MARB	REA	CWT
3	84	765	857	1360	0.32	0.33	38



LWNBRG HARVESTOR 171E

TED 171E ~ 2003059 ~ June 19 2017

S A V HARVESTOR 0338
Sire: **TED HARVESTOR 154A**
RED LWNBRG ANISTON 137S

S A V HERITAGE 629S
S A V EMBLYNETTE 7749
RED BRYLOR MASTER PLAN 17M
RED TED FARGO 33L
BLACK BRYLOR KODIAK 204Y
RED BRYLOR FAYETTE 40Y
RED LAZY MC COWBOY CUT 26U
RED TED MAKE MY DAY 57L

RED BRYLOR RED KODIAK 3A
Dam: **RED LWNBRG KODIAK 45C**
RED TED COWBOY CUT 96A

'19 EPDS	TOP%
BW+0.8	41
WW+54	4
YW +88	4
Milk+18	55
TM +45	10

AOD	BW	WW	205D	YW	MARB	REA	CWT
2	80	680	801	1245			

170E - massive 154A son with a bold rib shape, muscle and length
- will add frame size and produce sheer pounds
- rancher built bull with the value of extra age



170

171E - expressive muscle and shape, backed by a cow family that are very strong footed and highly maternal
- athletic beef bull with a moderate birth weight and top end growth



171

LWNBRG NEW STANDARD 130B & LOT 170



LWNBRG HARVESTOR 176E

TED 176E ~ 2056939 ~ June 29 2017

S A V HARVESTOR 0338
Sire: **TED HARVESTOR 154A**
RED LWNBRG ANISTON 137S

S A V HERITAGE 629S
S A V EMBLYNETTE 7749
RED BRYLOR MASTER PLAN 17M
RED TED FARGO 33L
CONNEALY PRODUCT 568
EBONISTA OF CONANGA 47I
LCC NEW STANDARD
TED IN FOCUS 59U

'19 EPDS	TOP%
BW+0.7	19
WW+47	45
YW +85	39
Milk+21	45
TM +45	46

CONNEALY FINAL PRODUCT
Dam: **TED FINAL PRODUCT 11Z**
TED NEW STANDARD 29X

AOD	BW	WW	205D	YW	MARB	REA	CWT
5	84	660	740	1205	0.44	0.2	30



TED FINAL PRODUCT 11Z



176

176E - big growthy bull with added length and a gentle demeanor
- moderate birth with consistent growth, and the maternal qualities you need for improving a cow herd

SEMEN PACKAGES.....BJ'S FIRE CRACKER 801

BJ'S FIRE CRACKER 801

BICC 1F~ 2021795 ~ January 1, 2018

S A V REGISTRY 2831
Sire: **S A V SENSATION 5615**
S A V BLACKCAP MAY 4136

RITO 707 OF IDEAL 3407
S A V MADAME PRIDE 0075
S A V TRAVELER 004
S A V MAY 2397
GDAR DUTCH 1508
DWAJO QUEEN GEM 43J
MINBURN MAIN EVENT 82K
MERIT JILT 47K

'19 EPDS	TOP%
BW+2.3	50
WW+48	40
YW +84	40
Milk+30	1
TM +53	10

DWAJO DUTCH 65P
Dam: **MERIT JILT 7091**
MERIT JILT 4233

AOD	BW	WW	205D	365D	MARB	REA	CWT
11	74		855	1443	0.13	0.45	36



S A V SENSATION 5616



MERIT JILT 7091



Fire Cracker has it all... a low 75 lb BW, terrific growth, length, outstanding muscle shape, hair quality, big testicular development, and moves like a cat. He was selected as the High seller from BJ Cattle Company this past fall. His dam, Merit Jilt 7091 has produced more high selling bulls and outstanding daughters than any other cow at BJ Cattle Co.! Sensation dam S A V Blackcap May 4136, is the #1 income producing cow in S A V history where she has generated over 4 million in receipts to date! Sensation himself was a sale highlight in 2016, selling for \$650,000. He is as complete a bull as you can build, with outstanding maternal presence and herd bull authority. When you analyse Firecracker and look at the production in his whole pedigree you realize the guess work is taken out. We will be using him on heifers and cows with confidence. Climb on board and let Firecracker 801 be your choice for the upcoming breeding season!

CANADIAN AngusONE EVALUATION

Please note that the EPDs listed in this sale catalogue are the product of the *new* Canadian AngusONE Genetic Evaluation. These EPDs are calculated by Angus Genetics Inc in partnership with the American Angus Association. Therefore, EPDs for Canadian Red Angus, Canadian Black Angus, and American Black Angus animals are directly comparable to each other. This is a completely new base for Canadian Red Angus however, therefore, please be advised that the EPDs are not comparable to last year's EPDs for Red Angus. These EPDs are on a completely different scale, so please familiarize your selves with the new Breed Average and with the new threshold number for traits of importance to you. The right EPD for you will depend on your cow herd, your management, and your breeding goals. For more information on using EPDs please contact your Association, the Canadian Angus Association, at 1-888-571-3580, and for more information about the genetics offered in this catalogue and what might best suit your breeding needs please contact the seller.

Average EPD's for all Red Calves born in 2018

BW	WW	YW	Milk	Total Maternal	MARB	REA	CW
+1.2	+35	+59	+19	+37	+0.24	+0.32	+21

Average EPD's for all Black Calves born in 2018

BW	WW	YW	Milk	Total Maternal	MARB	REA	CW
+2.2	+46	+79	+21	+44	+0.38	+0.42	+34

EPD: Expected Progeny Difference is the prediction of how progeny of each animal are expected to perform relative to the progeny of other animals in the Angus breed. As data continues to accumulate, accuracy levels rise and EPD's can shift accordingly.

BW: Birth weight is related to calving ease. Lower birth weights tend to reduce the incidence of calving difficulties. Lower birth weight EPD is more desirable for heifers.

WW: Weaning Weight is an indicator of growth from birth to weaning (205 days of age). During this period, the calf's growth is influenced by it's mother's ability to produce milk and it's own ability to grow.

YW: Yearling Weight is an indicator of growth from birth to yearling (365 days of age). The calf's growth during this period is influenced by its own ability to grow plus its mother's maternal abilities. It is the best estimate for total growth.

Milk: Milk EPD reflects the milking ability of a sire's daughters expressed in pounds of calf weaned.

TM: The Total Maternal EPD predicts the difference in weaning weight of the sire's daughter's progeny due to the combination of growth genetics and milking ability. It is equal to one-half of the weaning weight EPD plus the milk EPD.

--- CARCASS EPD ---

MARB: (%IMF) Marbling EPD is a predictor of the level of intramuscular fat and is derived using CUP ultrasound data and actual carcass data. Marbling determines quality grade.

REA: (Ribeye Area) Ribeye area is expressed in inches² and is a predictor of the area of ribeye muscle at the 12th/13th rib.

CWT: Is a predictor of transmitting ability for hot carcass weight.

TERMS & CONDITIONS

TERMS-The terms of the sale are cash or cheque payable at par to Balog Auction Services Ltd., Lethbridge, Alta. The right of property shall not pass until settlement is made. All settlements must be made with the clerks of the sale before any cattle will be released.

BIDS - Every animal entering the sale ring will be sold to the highest bidder. A floor price will apply to each animal consigned.

DISPUTES - In case of disputes, bidding will be reopened between parties involved. If no further bid is made, the buyer will be the person from whom the auctioneer accepted the last bid. The auctioneer's decision in such matters will be final.

PURCHASER'S RISK - Each animal becomes the risk of the purchaser as soon as sold.

ANNOUNCEMENTS - Errors discovered in the catalogue will be corrected by announcements from the Auction Stand at sale time and such corrections will take precedence over the printed matter in the catalogue.

CERTIFICATE OF REGISTRY - A certificate of registry duly transferred will be furnished to the buyer for each animal after the settlement is made.

SHIPPING - Assistance will be given in making shipment after the sale, but Balog Auction Services Ltd., or the seller assumes no risk. Expenses incurred are the responsibility of the purchaser. Purchasers are requested to furnish shipping instructions when making settlement. Any additional expenses are the responsibility of the buyer, including duty, brokerage fees, etc.

ACCIDENTS - Although every precaution will be taken to protect the safety and comfort of buyers, neither the sales manager, auctioneer nor the owner assumes any responsibility in this matter and disclaims any liability, legal or otherwise, in the event of accident or loss of property.

LIABILITY - Balog Auction Services Ltd. are acting as agents only and assume no responsibility for representations by the seller. Purchasers must look to the seller for fulfillment of all guarantees and representations made hereunder.

FUSOGARD VACCINE

All sale bulls have been vaccinated with Fusogard as an aid in the reduction of footrot, on January 23, 2018 and given an oral dewormer. Fusogard is an alternative for natural and organic beef producers because it's not an antibiotic. It is recommended to revaccinate annually as a preventative against signs of foot rot. All bulls are on the Pfizer Gold Program.

Actual weights to be taken March 12, 2019. These will be available, along with scrotal measurements and carcass data, as a supplementary sheet on sale day.

THANKS TO ALL OUR 2018 SALE SPONSORS



ROBERTS VETERINARY SERVICE

"OWNER'S USE ONLY"

COLLECTION & FREEZING BULL SEMEN
403-849-2444 robert.gordonray@gmail.com



Co-operative Limited
Brad & Michelle Williams
Bulk Fuel Agents



MILLENNIUM GENETICS

Leeuwenburgh Angus
Box 25
Lethbridge, AB
T1J 3Y3

28TH ANNUAL BULL SALE

TUESDAY, MARCH 12, 2019

1:00 PM - BAILOG AUCTION

LETHBRIDGE, ALBERTA

CANADA

PLEASE BRING THIS CATALOGUE TO THE SALE

